

Viewpoint 1: 180° panoramic view from the western edge of the proposed substation fenced yard. This view pans from roughly southeast (left) to northwest (right) and shows the surrounding area south and west of the Project site. The orange rectangle towards the right of this image represents the following photo, which is captured with a 50mm equivalent lens.



Viewpoint 1: View from the western edge of the proposed substation fenced yard looking west towards Whipple Hollow Road, as represented by the orange rectangle in the image above.



Viewpoint 1: 180° panoramic view from the western edge of the proposed substation fenced yard. This view pans from roughly northwest (left) to the southeast (right) and shows the surrounding area towards the north and east of the Project site. The orange rectangle near the center of this image represents the following photo, which is captured with a 50mm equivalent lens.



Viewpoint 1: View from the western edge of the proposed substation fenced yard looking north at existing vegetation between the Project and Whipple Hollow Road, as represented by the orange rectangle in the image above.



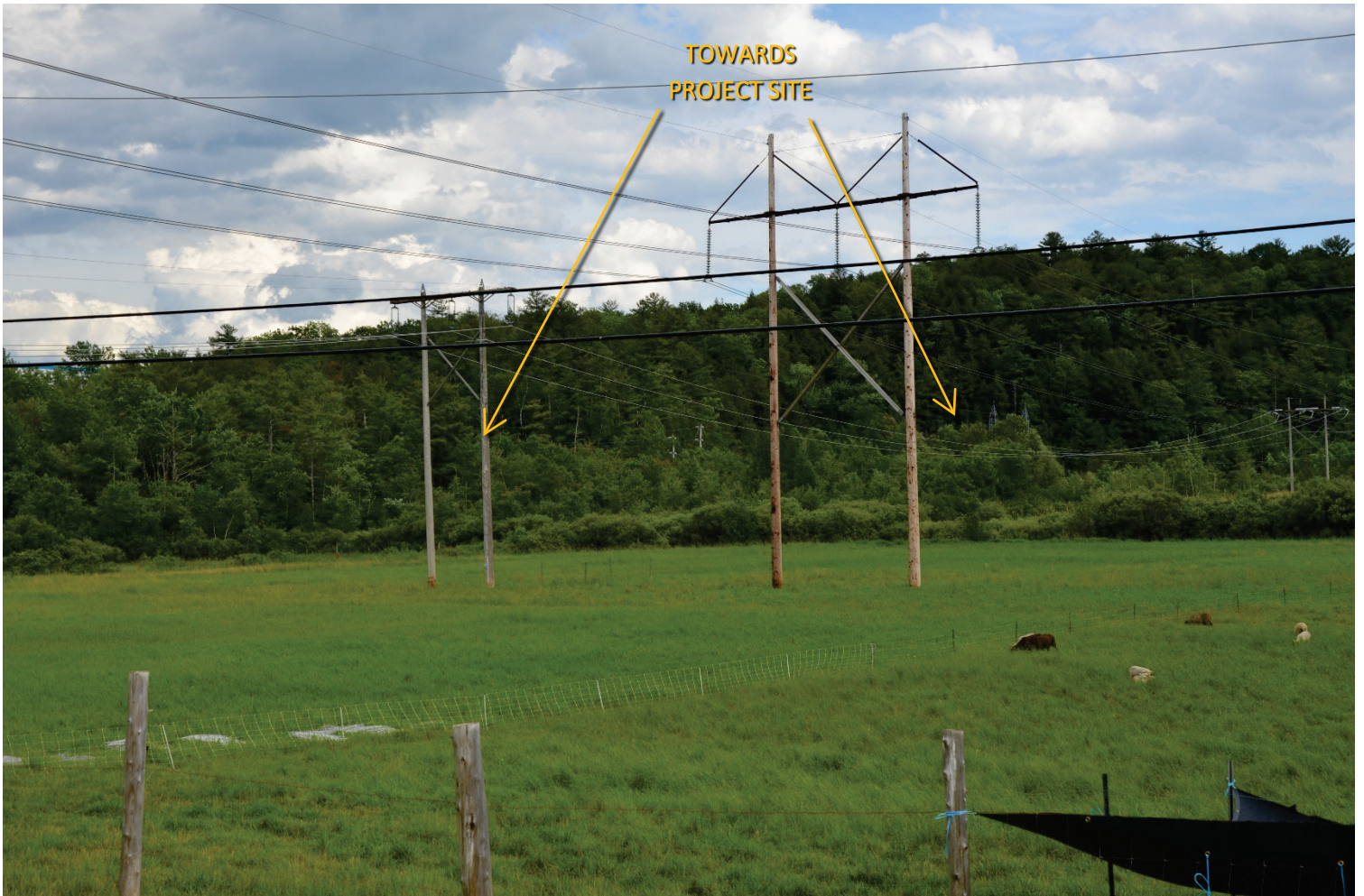
Viewpoint 2: Approximately 180° panoramic view from Whipple Hollow Road, northwest of the Project site. This view pans from roughly east (left) to west (right). The orange rectangle towards the left of this image represents the following photo, which is captured with a 50mm equivalent lens.



Viewpoint 2: View looking southeast towards the Project site from Whipple Hollow Road, as represented by the orange rectangle in the image above.



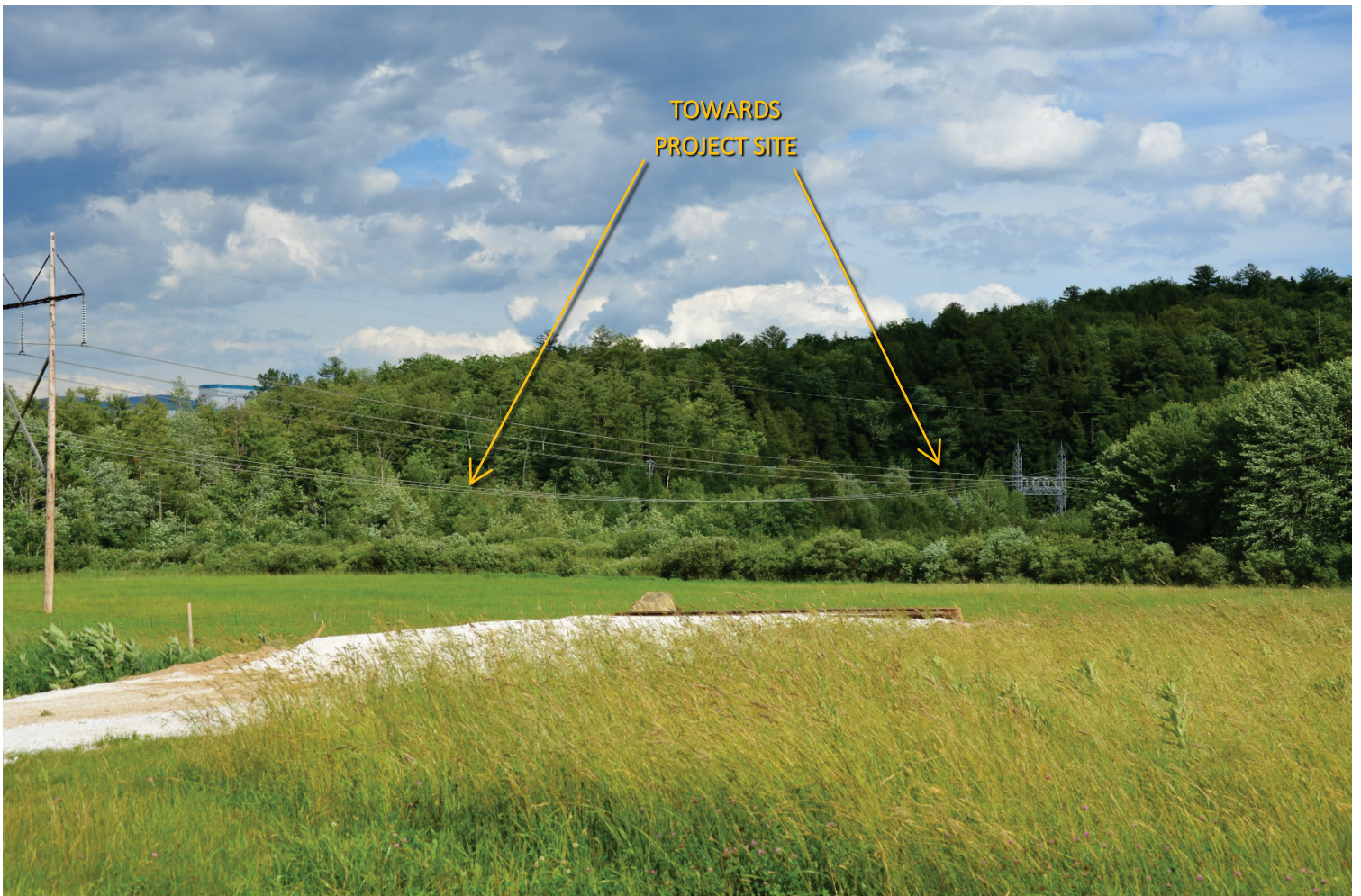
Viewpoint 3: Approximately 180° panoramic view from Whipple Hollow Road, northwest of the Project site. This view pans from roughly northeast (left) to southwest (right). The orange rectangle towards the left of this image represents the following photo, which is captured with a 50mm equivalent lens.



Viewpoint 3: View looking southeast towards the Project site from Whipple Hollow Road, as represented by the orange rectangle in the image above.



Viewpoint 4: Approximately 180° panoramic view from Whipple Hollow Road, northwest of the Project site. This view pans from roughly northeast (left) to southwest (right). The orange rectangle towards the left of this image represents the following photo, which is captured with a 50mm equivalent lens.



Viewpoint 4: View looking southeast from Whipple Hollow Road towards the Project site, as represented by the orange rectangle in the image above.



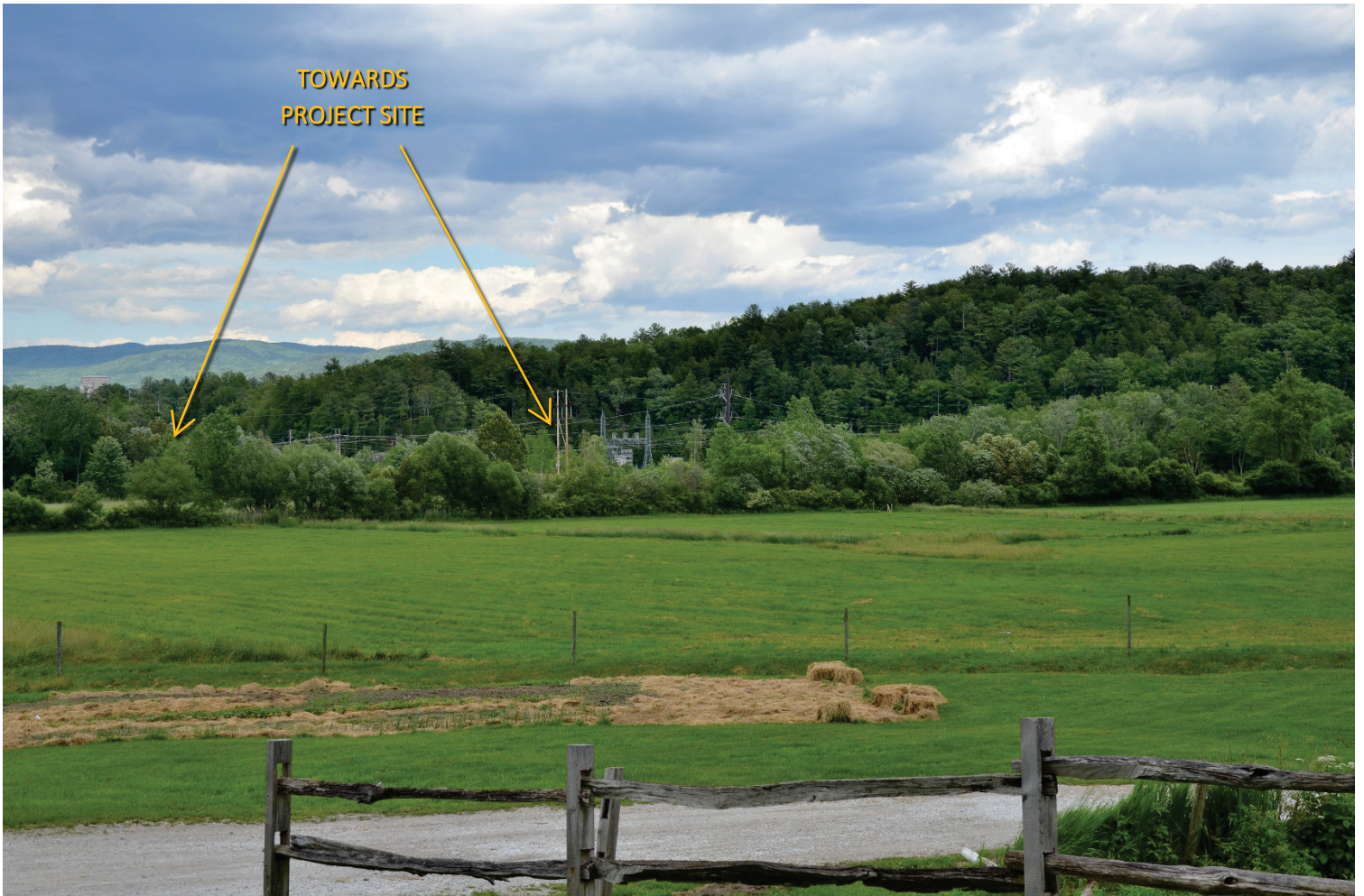
Viewpoint 5: Approximately 180° panoramic view from Whipple Hollow Road, west of the Project site. This view pans from roughly northeast (left) to southwest (right). The orange rectangle towards the left of this image represents the following photo, which is captured with a 50mm equivalent lens.



Viewpoint 5: View looking east from Whipple Hollow Road towards the Project site, as represented by the orange rectangle in the image above.



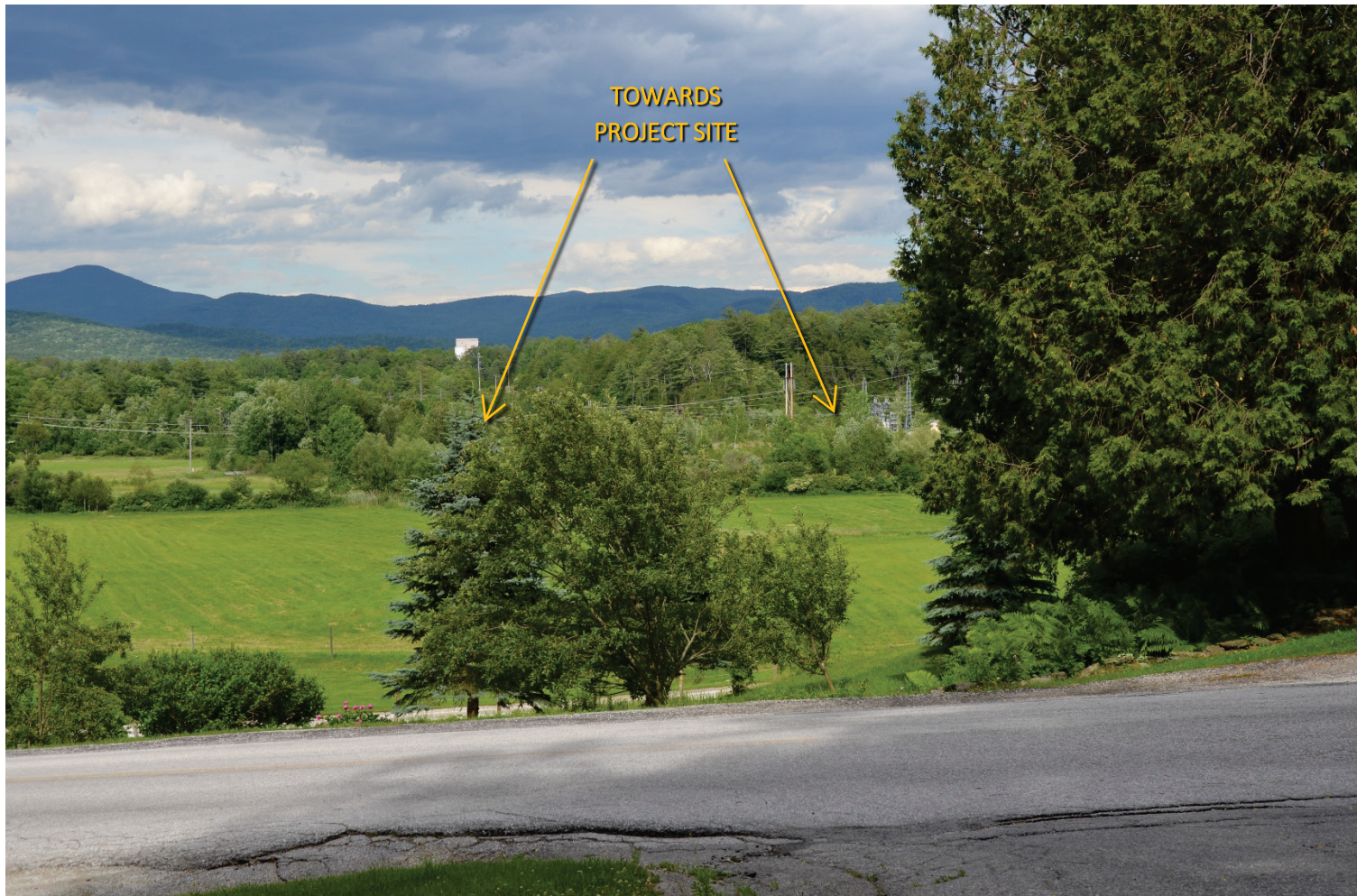
Viewpoint 6: Approximately 180° panoramic view from Whipple Hollow Road, west and slightly south of the Project site. This view pans from roughly north (left) to south (right). The orange rectangle near the center of this image represents the following photo, which is captured with a 50mm equivalent lens.



Viewpoint 6: View looking east from Whipple Hollow Road towards the Project site, as represented by the orange rectangle in the image above.



Viewpoint 7: Approximately 180° panoramic view from Markowski Road near the intersection with Whipple Hollow Road, southwest of the Project site. This view pans from roughly northwest (left) to southeast (right). The orange rectangle near the center of this image represents the following photo, which is captured with a 50mm equivalent lens.



Viewpoint 7: View looking northeast from Markowski Road towards the Project site, as represented by the orange rectangle in the image above.



Viewpoint 8: View looking southwest from Whipple Hollow Road near the intersection with Fire Hill Road towards the Project site.



Viewpoint 9: View looking southeast from Fire Hill Road towards the Project site.