

Vermont Transco LLC
First Revised Rate Schedule No.7
Original Service Agreement No. 1

VERMONT TRANSCO LLC
SUBSTATION PARTICIPATION AGREEMENT
SERVICE AGREEMENT

Karen K. O'Neill
VT Transco - Managing Member Representative

Effective On: December 1, 2010

Issued On: November __, 2010

VERMONT TRANSCO LLC
SUBSTATION PARTICIPATION AGREEMENT
EXHIBIT A: STANDARD SERVICE AGREEMENT

PARTICIPANT:	CENTRAL VERMONT PUBLIC SERVICE CORPORATION
--------------	--------------------------------------------

SUBSTATION:	NEWFANE
-------------	---------

EXPIRATION OF INITIAL TERM:	November 22, 2040
-----------------------------	-------------------

This Standard Service Agreement between Vermont Transco LLC ("VT Transco") and PARTICIPANT, dated November 22, 2010, is hereby made effective immediately as to the above substation and shall remain in effect until terminated in accordance with ARTICLE II of the Substation Participation Agreement (the "SPA").

Notwithstanding Article V of the SPA, Central Vermont Public Service Corporation shall operate all 46 kV Exclusive Facilities.

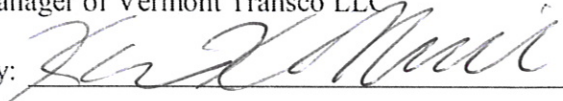
ACKNOWLEDGEMENT OF ARBITRATION: THE PARTIES TO THIS AGREEMENT UNDERSTAND THAT IT CONTAINS AN AGREEMENT TO ARBITRATE. AFTER SIGNING THIS DOCUMENT, BOTH PARTIES UNDERSTAND THAT THEY WILL NOT BE ABLE TO BRING A LAWSUIT CONCERNING ANY DISPUTE THAT MAY ARISE WHICH IS COVERED BY THE ARBITRATION AGREEMENT, UNLESS IT INVOLVES A QUESTION OF CONSTITUTIONAL OR CIVIL RIGHTS. INSTEAD, BOTH PARTIES AGREE TO SUBMIT ANY SUCH DISPUTE TO AN IMPARTIAL ARBITRATOR.

Issued by: Karen K. O'Neill
VT Transco - Managing Member Representative
Issued On: November 22, 2010

Effective On: December 1, 2010

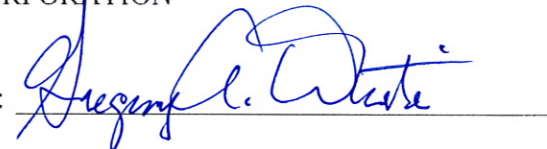
IN WITNESS WHEREOF, VT Transco and PARTICIPANT, have caused this Agreement to be executed by their respective officers thereunto duly authorized, as of this 22nd day of November, 2010.

VERMONT TRANSCO LLC
By: Vermont Electric Power Company, Inc.,
manager of Vermont Transco LLC

By: 

Title: General Counsel

CENTRAL VERMONT PUBLIC SERVICE
CORPORATION

By: 

Title: Director of Engineering & System
Operations

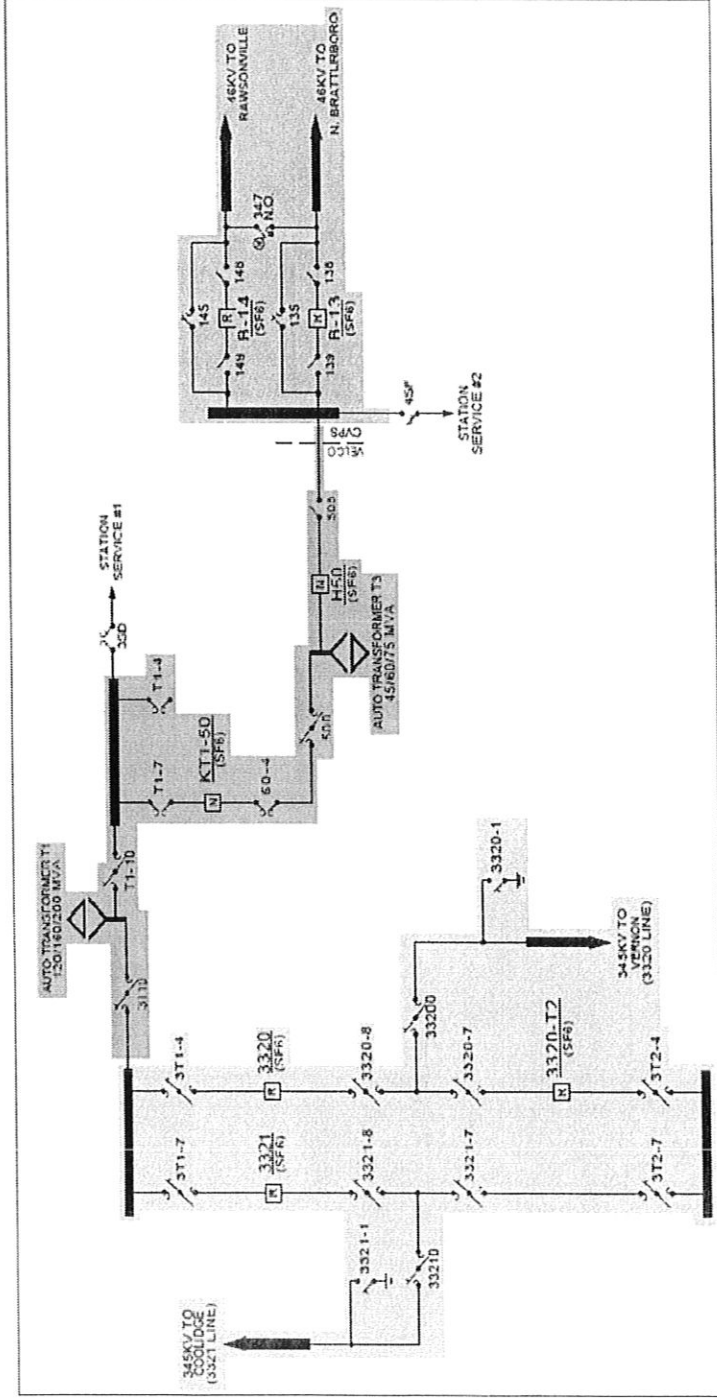
Issued by: Karen K. O'Neill
VT Transco - Managing Member Representative

Effective On: December 1, 2010

Issued On: November __, 2010

Newfane Substation Online Diagram And Asset Classification

This document contains Critical Energy Infrastructure Information (CEII) that is
This document does not contain CEII



FACILITIES REFERENCE LEGEND

- PTF FACILITIES
- VELCO FACILITIES THAT COMPRISE THE STATEWIDE, HIGH VOLTAGE TRANSMISSION GRID, INTERCONNECTING AND SERVING THE LOAD CENTERS OF THE STATE, AND ARE USED IN COMMON BY ALL PURCHASERS OF TRANSMISSION SERVICES ON A STATEWIDE BASIS. THIS INCLUDES FACILITIES CONSTRUCTED PRIOR TO 7-1-90, OR ANY SPECIFIC FACILITIES CONSTRUCTED AFTER 7-1-90 THAT HAVE BEEN RECLASSIFIED AS COMMON FACILITIES AS A RESULT OF BEING IN SERVICE FOR A PERIOD OF TEN YEARS.
- SPECIFIC FACILITIES
- HIGH VOLTAGE LINES, SUBSTATIONS AND OTHER APPURTENANCES CONSTITUTING A DIRECT PHYSICAL CONNECTION TO THE VELCO (COMMON) TRANSMISSION SYSTEM AND ARE NOT PART OF THE LOOPED TRANSMISSION GRID. THESE FACILITIES ARE USED AND INSTALLED TO BENEFIT A REQUESTING PURCHASER OF TRANSMISSION SERVICE. IN THE CASE OF A SUBSTATION (STEPPING DOWN TO A LOWER VOLTAGE) THIS INCLUDES THE TRANSFORMER, HIGH SIDE CIRCUIT SWITCHER, BANK BREAKER, ANCILLARY DEVICES, CONTROLS AND CONTROL CIRCUITRY (REFER TO COMMON FACILITIES DEFINITION FOR CRITERIA OF RECLASSIFICATION).

- EXCLUSIVE FACILITIES
- EQUIPMENT CONNECTED TO THE LOW VOLTAGE BUS, INCLUDING ANY ASSOCIATED PROTECTION, CONTROL, AND METERING SYSTEMS THAT HAVE BEEN CONSTRUCTED UNDER A VELCO WORK ORDER, AND ARE TO BE FULLY OWNED AND FUNDED BY THE PURCHASER OF TRANSMISSION SERVICE UPON COMMISSIONING. THIS TYPICALLY INCLUDES FOUNDATIONS AND STRUCTURES, BREAKERS AND SWITCHES, INSULATORS, LINE POTENTIAL TRANSFORMERS, CONDUIT, CABLE AND GROUNDING, ONGOING MAINTENANCE AND TESTING OF THESE FACILITIES ARE SUBJECT TO THE TERMS AND CONDITIONS OF VELCO'S SUBSTATION PARTICIPATION AGREEMENT.
- SHARED FACILITIES (COMMON USE)
- TYPICALLY CONSISTING OF EQUIPMENT LOCATED WITHIN SUBSTATIONS THAT ARE SHARED IN SOME MANNER FOR THE BENEFIT OF BOTH VELCO AND THE PURCHASER OF TRANSMISSION SERVICE. THIS INCLUDES STRUCTURES (BUILDINGS) AND IMPROVEMENTS, FENCING AND GATES, LOW VOLTAGE DISCONNECT SWITCHES, BUS WORK, LOW VOLTAGE POTENTIAL TRANSFORMERS (STATION SERVICE AND BUS POTS), COMPLETE STAGERS, GROUNDING SYSTEMS, SUPPORTS AND CABLE TRAYS, BATTERIES AND CHARGERS, SWITCHSTICKS AND GLOWTECTORS, LADDERS, TABLES AND SUPPLY CABINETS, ONGOING MAINTENANCE AND TESTING OF THESE FACILITIES ARE SUBJECT TO THE TERMS AND CONDITIONS OF VELCO'S SUBSTATION PARTICIPATION AGREEMENT.

Karen K. O'Neill
 VT Transco - Managing Member Representative
 Issued On: November 2010

Effective On: December 1, 2010

Exclusive Cost of Central Vermont Public Service Corporation
at Newfane Substation

<u>Description</u>	<u>Quantity</u>	<u>TBD as of 12/2010 Amount</u>
46kV Breaker	2	
46kV Radial Bus	1	
46kV Single Blade Disconnects	12	
46KV Gang Operated Disconnects	2	
46kV Line Voltage Transformers	2	
46kV Bus Voltage Transformers	1	
46kV MOAB	1	
46kV Lightning Arrestors	6	
Insulators	1	
Buswork	1	
Conduits and Control Cable	1	
Controls Panels	1	
Total Exclusive Costs	Estimated	<u>540,000.00</u>

Shared Use Costs (not reduced to reflect PTF allocation)
of Central Vermont Public Service Cooperation
at Newfane

Description	Quantity	TBD as of 12/2010 Amount
Control House Foundation	115	
Station Building/Control House	1	
Property Fence	1765	
Landscaping	1	
Access Road	1400	
Yard and Fence Drainage	1	
Yard Surfacing	3450	
Floodlights, lamps and wiring	18	
Site clearing and Grading	1	
115kV Steel Stand for Station Service	2510	
46kV Fuse Disconnects	8	
46kV Station Service VT	3	
46kV Line VT	1	
Grounding System	1	
Battery System	1	
46kV Station Service Transformer	3	
115kV Station Service Transformer	3	
AC/DC Distribution System	1	
Emergency Generator	1	
Total	Estimated	<u>6,775,000.00</u>