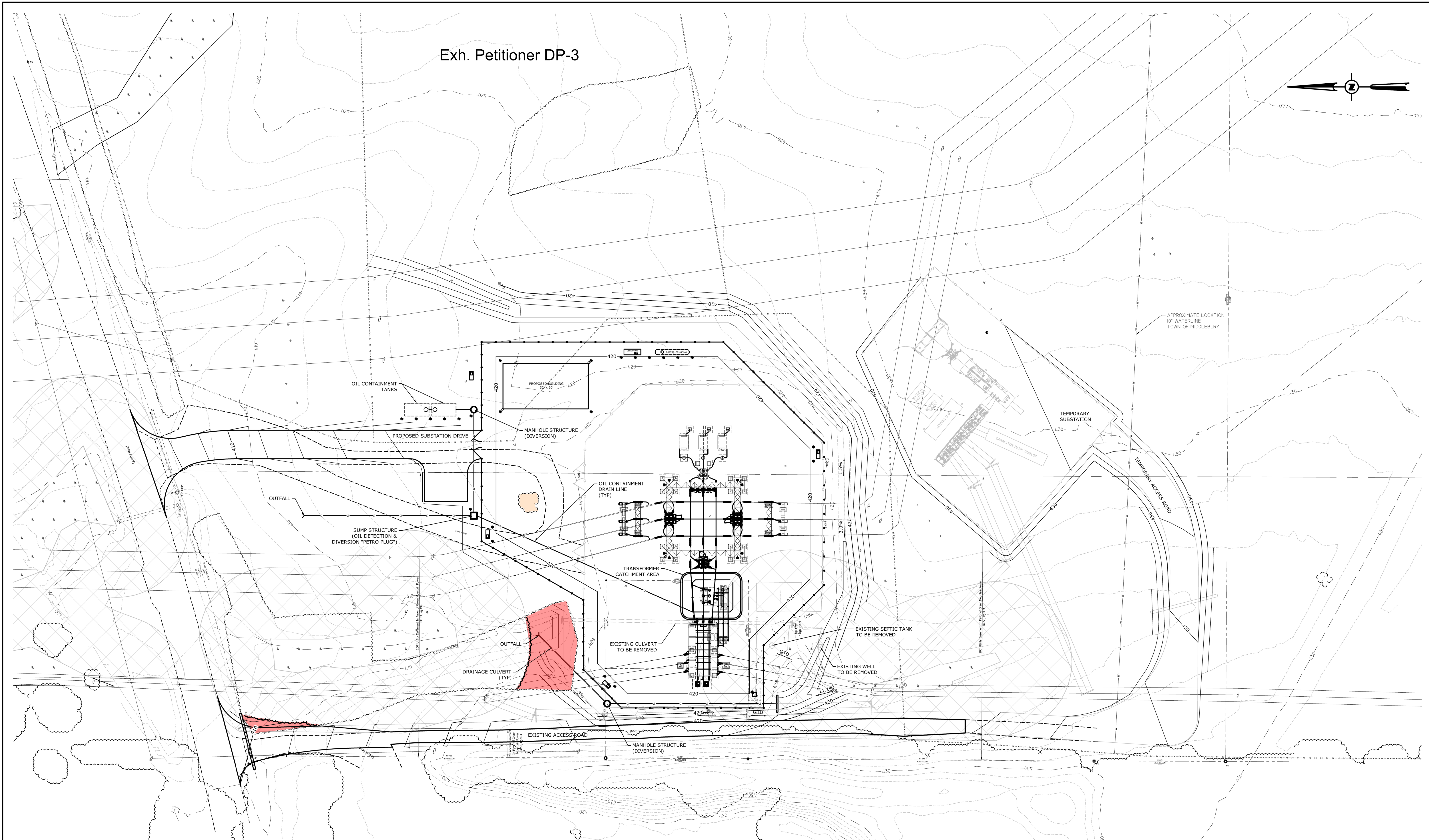
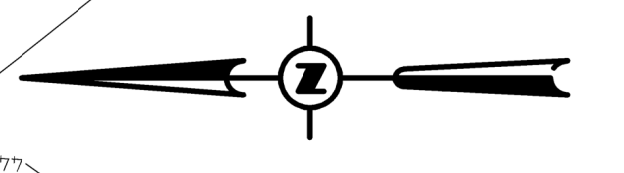


Exh. Petitioner DP-3



COLOR KEY

- EXISTING INFRASTRUCTURE TO REMAIN
- EXISTING INFRASTRUCTURE TO BE REMOVED
- PROPOSED OR RELOCATED INFRASTRUCTURE
- TEMPORARY INFRASTRUCTURE

LEGEND

- SUBSTATION FENCE
- FIELD FENCE
- EXISTING 2' CONTOUR
- EXISTING 10' CONTOUR
- PROPOSED 2' CONTOUR
- PROPOSED 10' CONTOUR
- EXISTING UTILITY POLE ANCHOR
- EXISTING EDGE OF GRAVEL/PAVEMENT
- APPROXIMATE BOUNDARY LINE
- APPROXIMATE ROW LINE
- WETLAND
- WETLAND BUFFER
- EXISTING TREELINE
- PROPOSED TREELINE
- PROPOSED DRAINAGE
- EXISTING DRAINAGE

- VEGETATION CLEARING
- SCREEN PLANTING REMOVAL

GENERAL NOTE:
1. THIS PLAN DOES NOT CONSTITUTE A BOUNDARY SURVEY.



		VERMONT ELECTRIC POWER CO., INC. RUTLAND, VERMONT	
MIDDLEBURY SUBSTATION VEGETATION CLEARING PLAN 115/46 kV YARD			
SCALE: AS SHOWN	DRAWN BY: JJO	APPROVED BY:	DATE:
DATE: 12/26/22	CHECKED BY: JWK		
SHEET NUMBER: 208-CLEARING		REV.:	