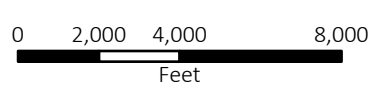



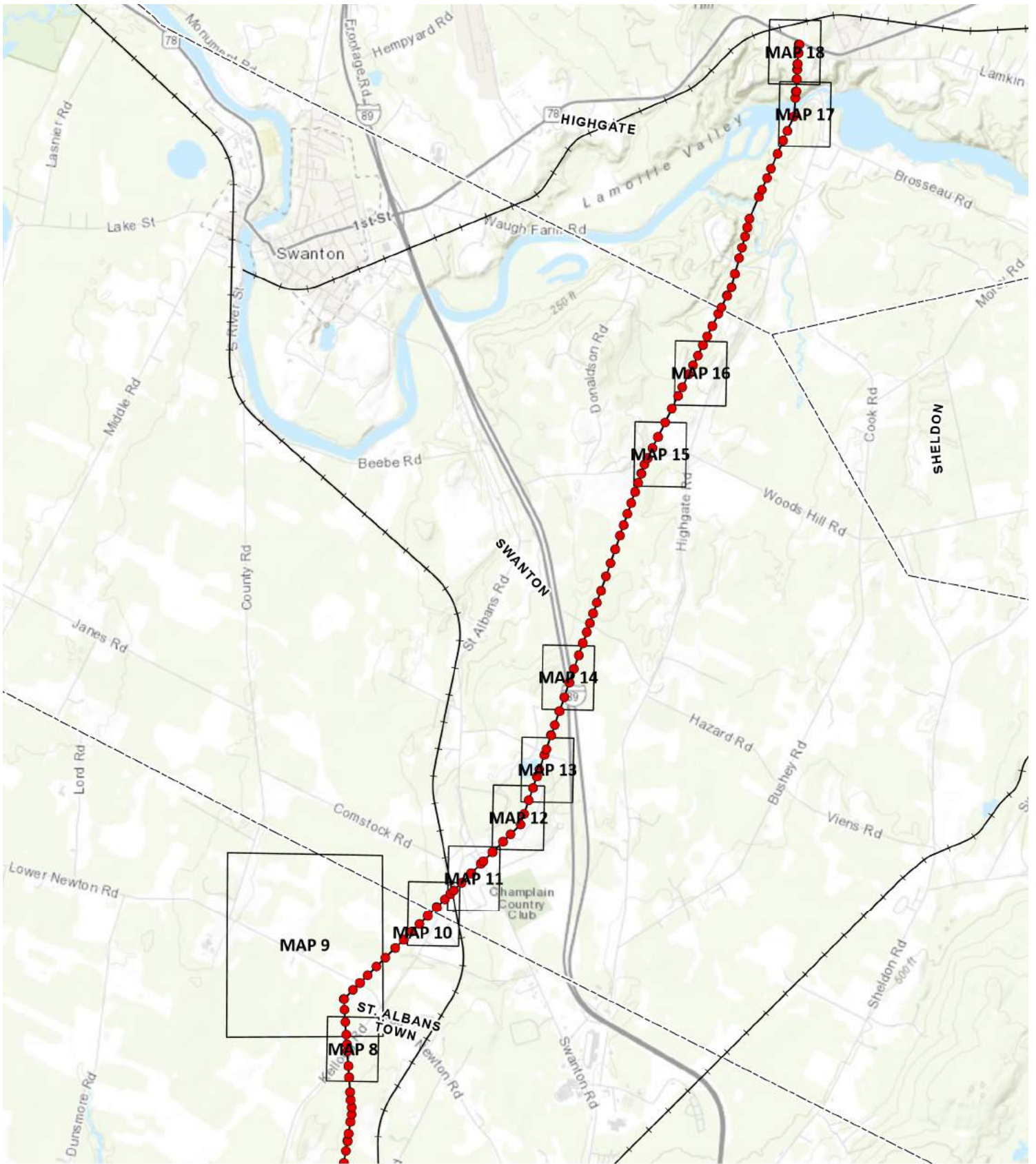


VELCO Franklin County Line Upgrade  
INDEX MAP 1

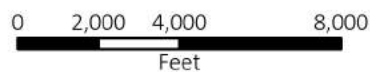


-  Town Boundary
-  Map Layout Key
-  Proposed Structure

Index Map 1: Georgia and St. Albans Town, VT



**VELCO Franklin County Line Upgrade  
INDEX MAP 2**

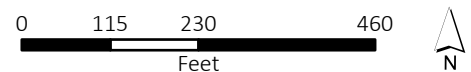


- Town Boundary
- Map Layout Key
- Proposed Structure

**Index Map 2:** St. Albans Town, Swanton, and Highgate, VT



VELCO Franklin County Line Upgrade - MAP 1:  
Decker Road / Plains Road Corridor Crossings - Georgia, VT





**Viewpoint 1:** Approximately 180° panoramic view from Decker Road, panning from south (left) to north (right). The orange rectangle represents the image below, which is captured with a 50mm lens.



**Viewpoint 1:** View from Decker Road east of the ROW, looking northwest. (50mm)



**Viewpoint 2:** Approximately 180° panoramic view from Decker Road, panning from south (left) to north (right). The orange rectangle represents the image below, which is captured with a 50mm lens.



**Viewpoint 2:** View from Decker Road at the east edge of ROW corridor, looking south. (50mm)



**Viewpoint 3:** Approximately 180° panoramic view from Decker Road, panning from northwest (left) to southeast (right). The orange rectangle represents the image below, which is captured with a 50mm lens.



**Viewpoint 3:** View from Decker Road looking north towards structure Ex. 215. (50mm)



**Viewpoint 4:** Approximately 180° panoramic view from Plains Road, panning from north (left) to south (right). The orange rectangle represents the image below, which is captured with a 50mm lens.



**Viewpoint 4:** View from Plains Road looking east towards structure Ex. 217. (50mm)

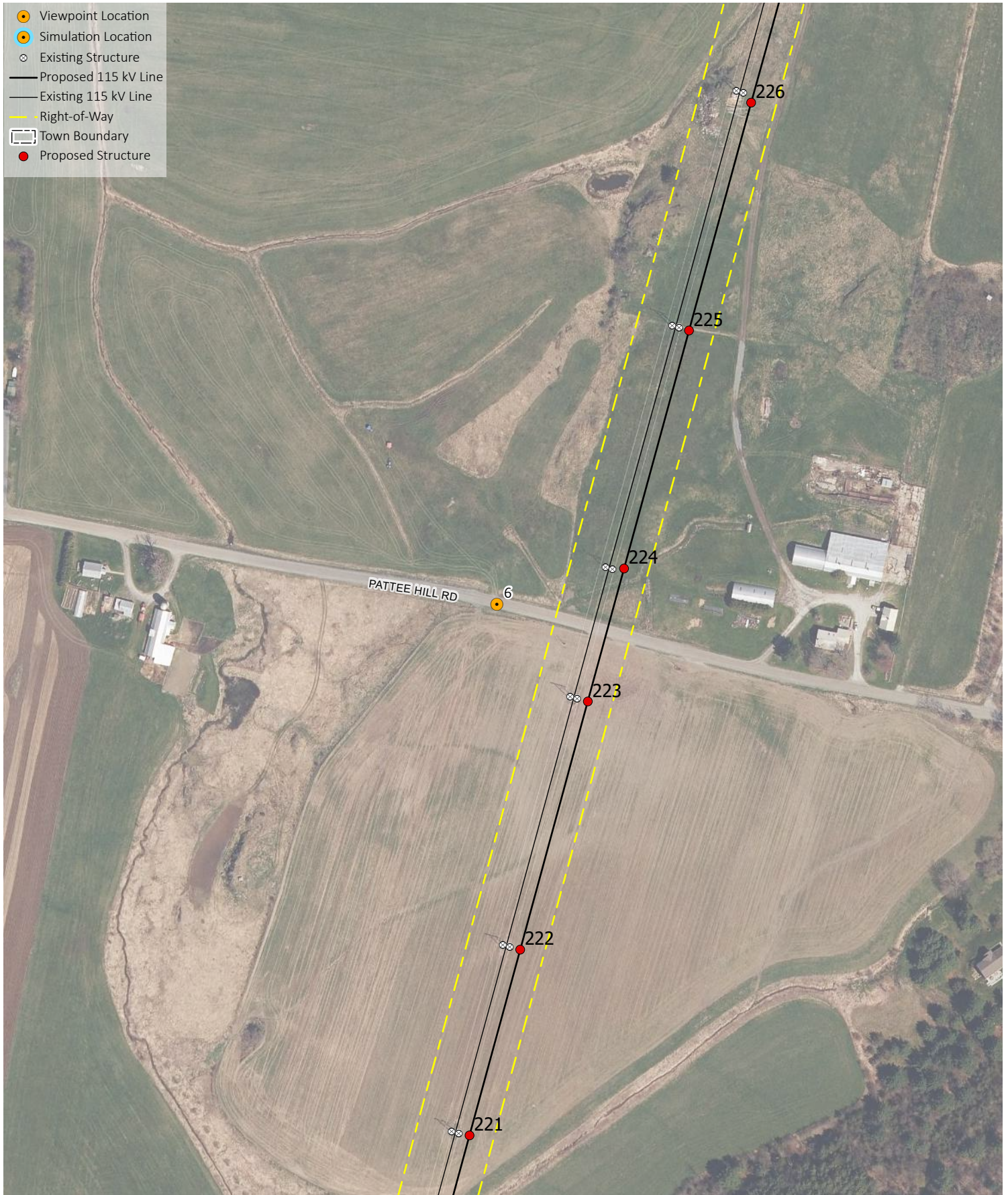


**Viewpoint 5:** Approximately 180° panoramic view from Plains Road, panning from southwest (left) to northeast (right). The orange rectangle represents the image below, which is captured with a 50mm lens.

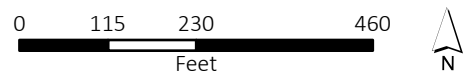


**Viewpoint 5:** View from Plains Road looking southwest towards structure Ex. 216. (50mm)





VELCO Franklin County Line Upgrade - MAP 2:  
Pattee Hill Road Corridor Crossing - Georgia, VT

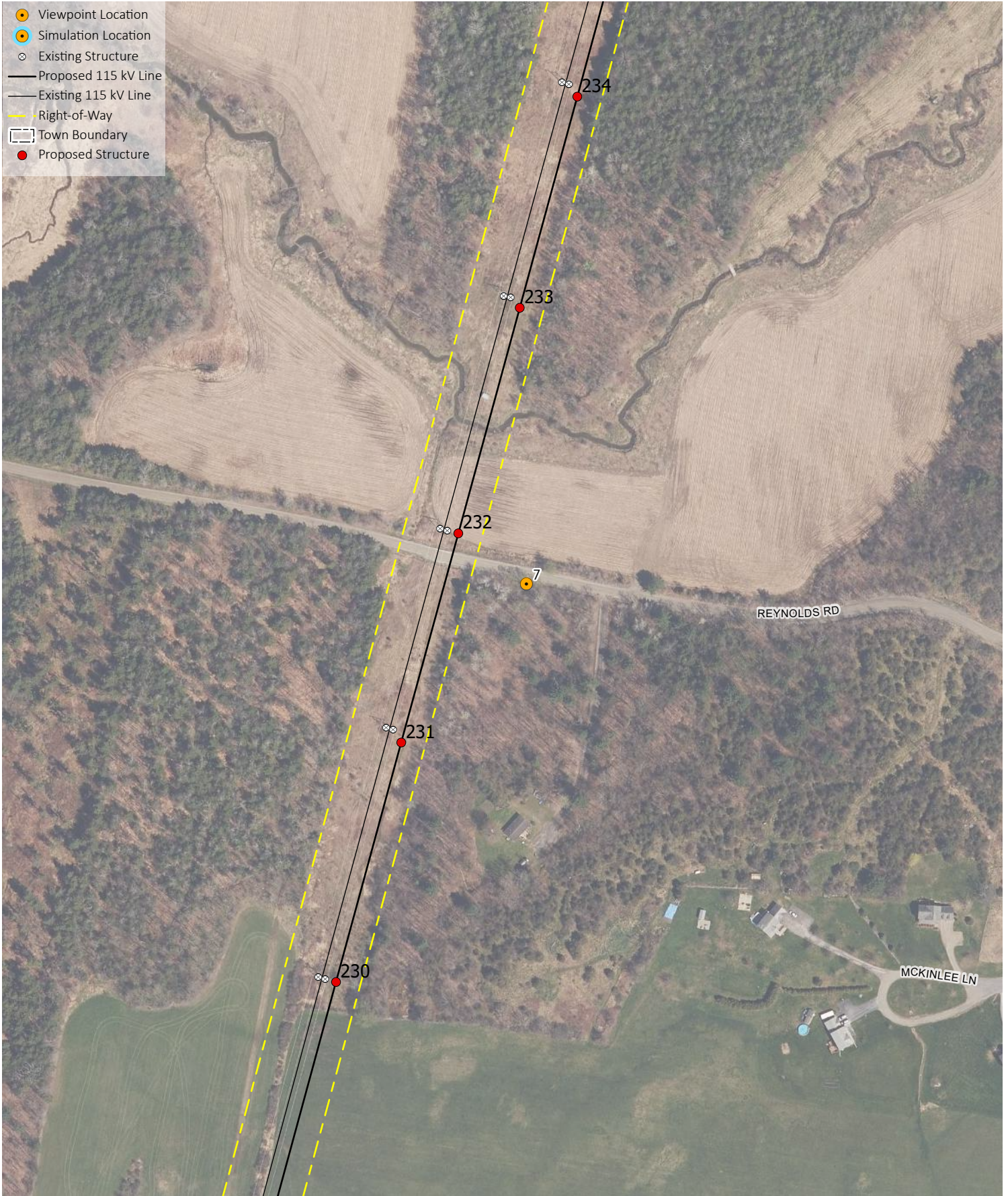




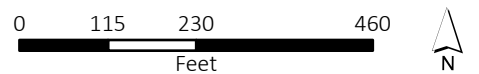
**Viewpoint 6:** Approximately 180° panoramic view from Pattee Hill Road, panning from north (left) to south (right). The orange rectangle represents the image below, which is captured with a 50mm lens.



**Viewpoint 6:** View from Pattee Hill Road looking northeast towards structure Ex. 224. (50mm)



VELCO Franklin County Line Upgrade - MAP 3:  
Reynolds Road Corridor Crossing - Georgia, VT

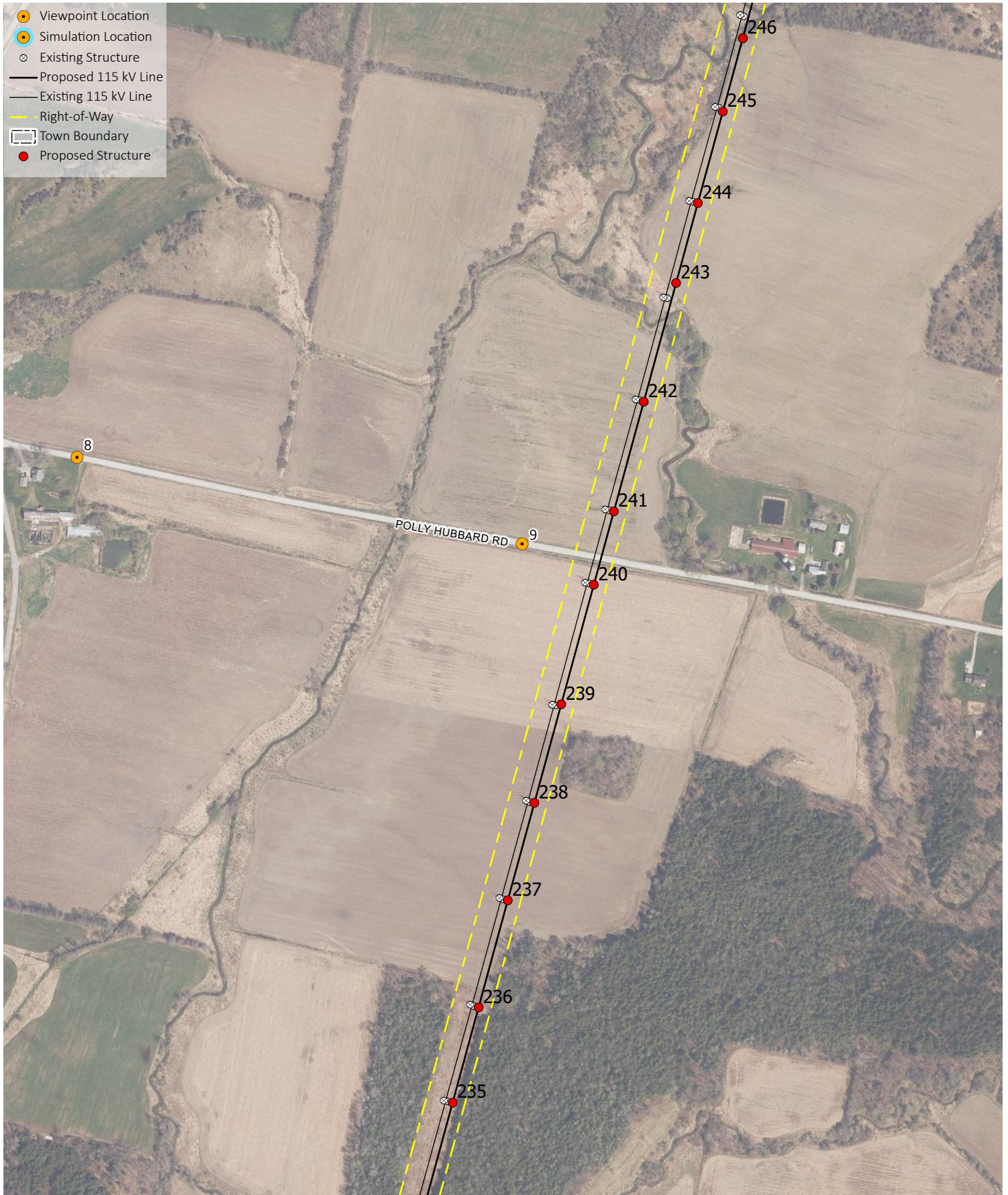




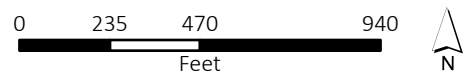
**Viewpoint 7:** Approximately 180° panoramic view from Reynolds Road, panning from west (left) to east (right). The orange rectangle represents the image below, which is captured with a 50mm lens.



**Viewpoint 7:** View from Reynolds Road looking northwest towards structure Ex. 232. (50mm)



VELCO Franklin County Line Upgrade - MAP 4:  
Polly Hubbard Road Corridor Crossing - Georgia, VT





**Viewpoint 8:** Approximately 180° panoramic view from Polly Hubbard Road panning from north (left) to south (right). The orange rectangle represents the image below, which is captured with a 50mm lens.



**Viewpoint 8:** View from Polly Hubbard Road looking east towards the Project. (50mm)



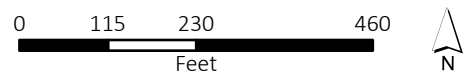
**Viewpoint 9:** Approximately 180° panoramic view from Polly Hubbard Road, panning from north (left) to south (right). The orange rectangle represents the image below, which is captured with a 50mm lens.



**Viewpoint 9:** View from Polly Hubbard Road looking northeast towards structure Ex. 241. (50mm)



VELCO Franklin County Line Upgrade - MAP 5:  
Mill River Road / Falls Road Corridor Crossings - Georgia, VT







**Viewpoint 10:** Approximately 180° panoramic view from Mill River Road, panning from north (left) to south (right). The orange rectangle represents the image below, which is captured with a 50mm lens.



**Viewpoint 10:** View from Mill River Road looking east towards structure Ex. 267. (50mm)



**Viewpoint 11:** Approximately 180° panoramic view from Mill River Road, panning from south (left) to north (right). The orange rectangle represents the image below, which is captured with a 50mm lens.



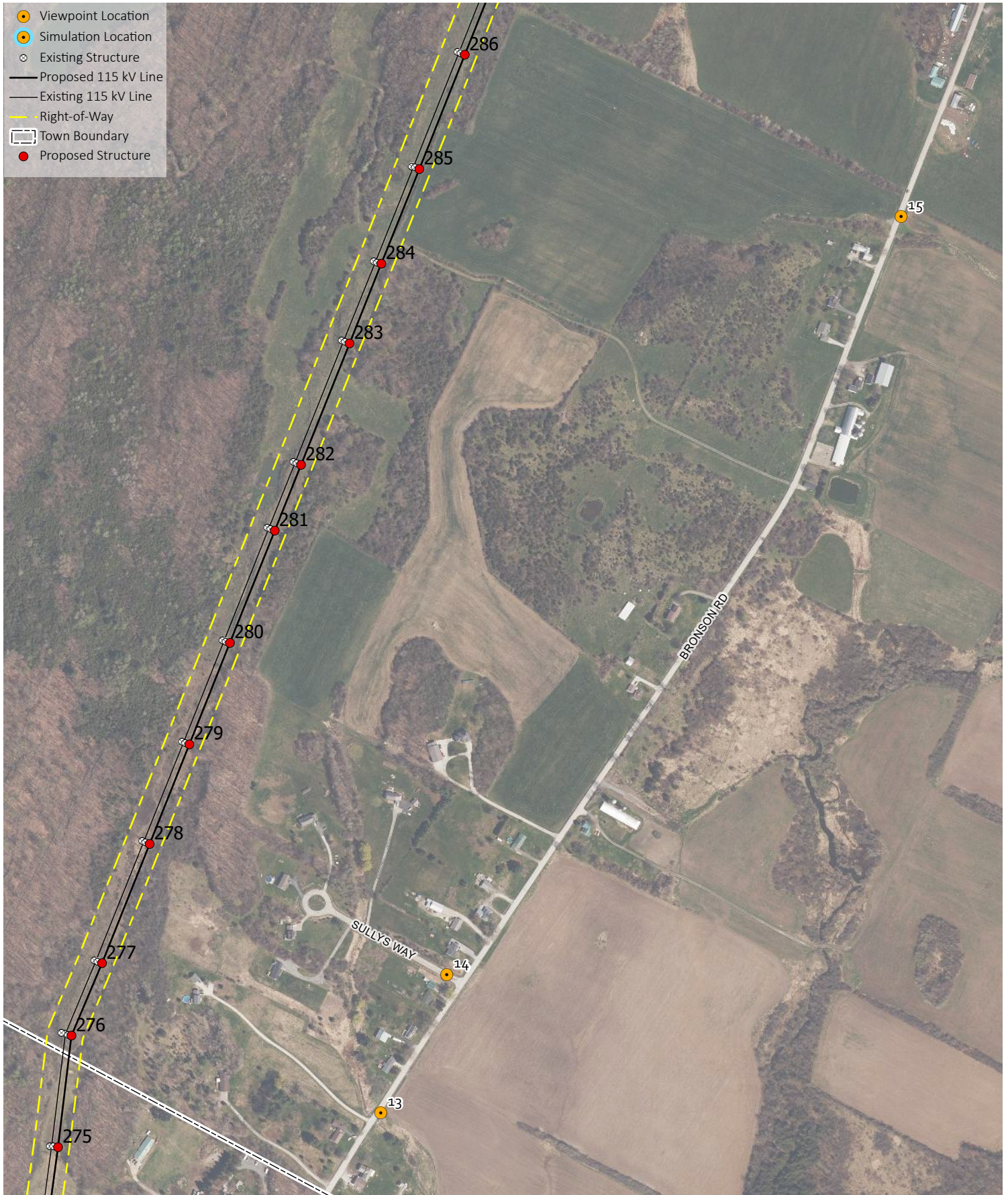
**Viewpoint 11:** View from Mill River Road looking north towards structure Ex. 268. (50mm)



**Viewpoint 12:** Approximately 180° panoramic view from Mill River Road, panning from south (left) to north (right). The orange rectangle represents the image below, which is captured with a 50mm lens.



**Viewpoint 12:** View from Mill River Road looking southwest towards structure Ex. 266. (50mm)



VELCO Franklin County Line Upgrade - MAP 6:  
Bronson Road - St. Albans Town, VT

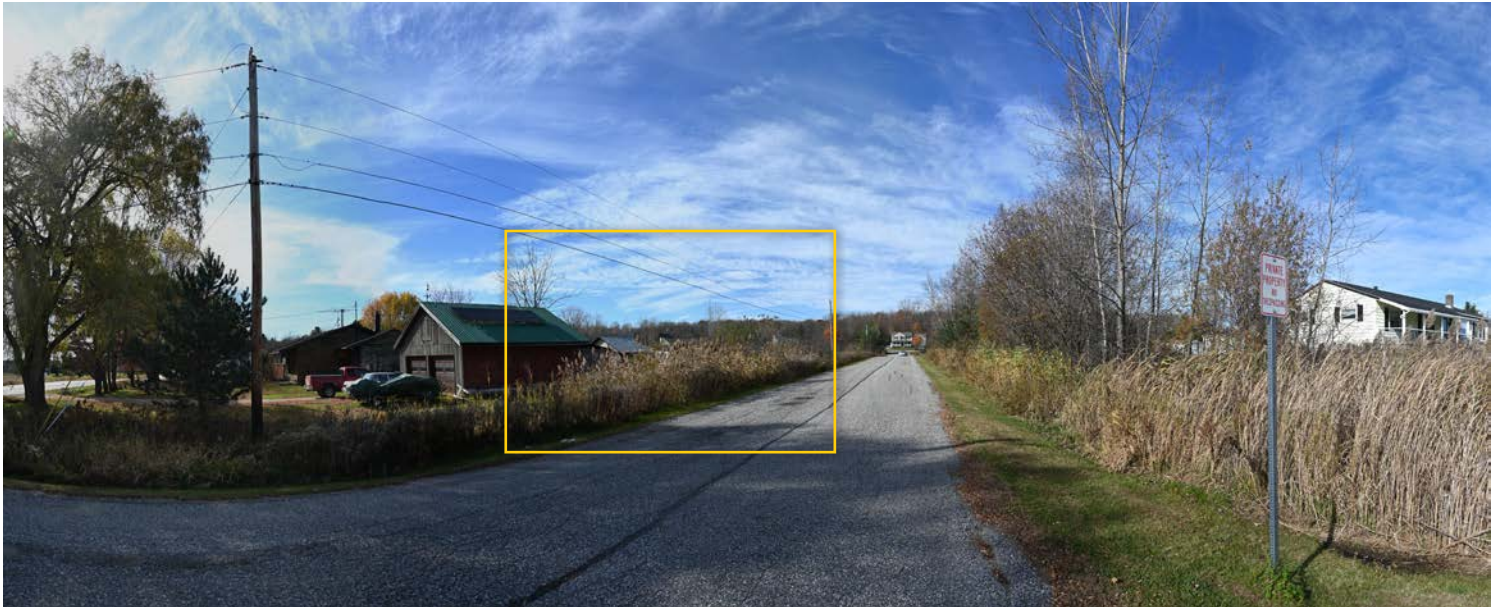




**Viewpoint 13:** Approximately 180° panoramic view from Bronson Road east of the Project, panning from southwest (left) to northeast (right). The orange rectangle represents the image below, which is captured with a 50mm lens.



**Viewpoint 13:** View from Bronson Road looking northwest towards structure Ex. 278. (50mm)



**Viewpoint 14:** Approximately 180° panoramic view from Sully's Way immediately west of Bronson Road, panning from south (left) to north (right). The orange rectangle represents the image below, which is captured with a 50mm lens.



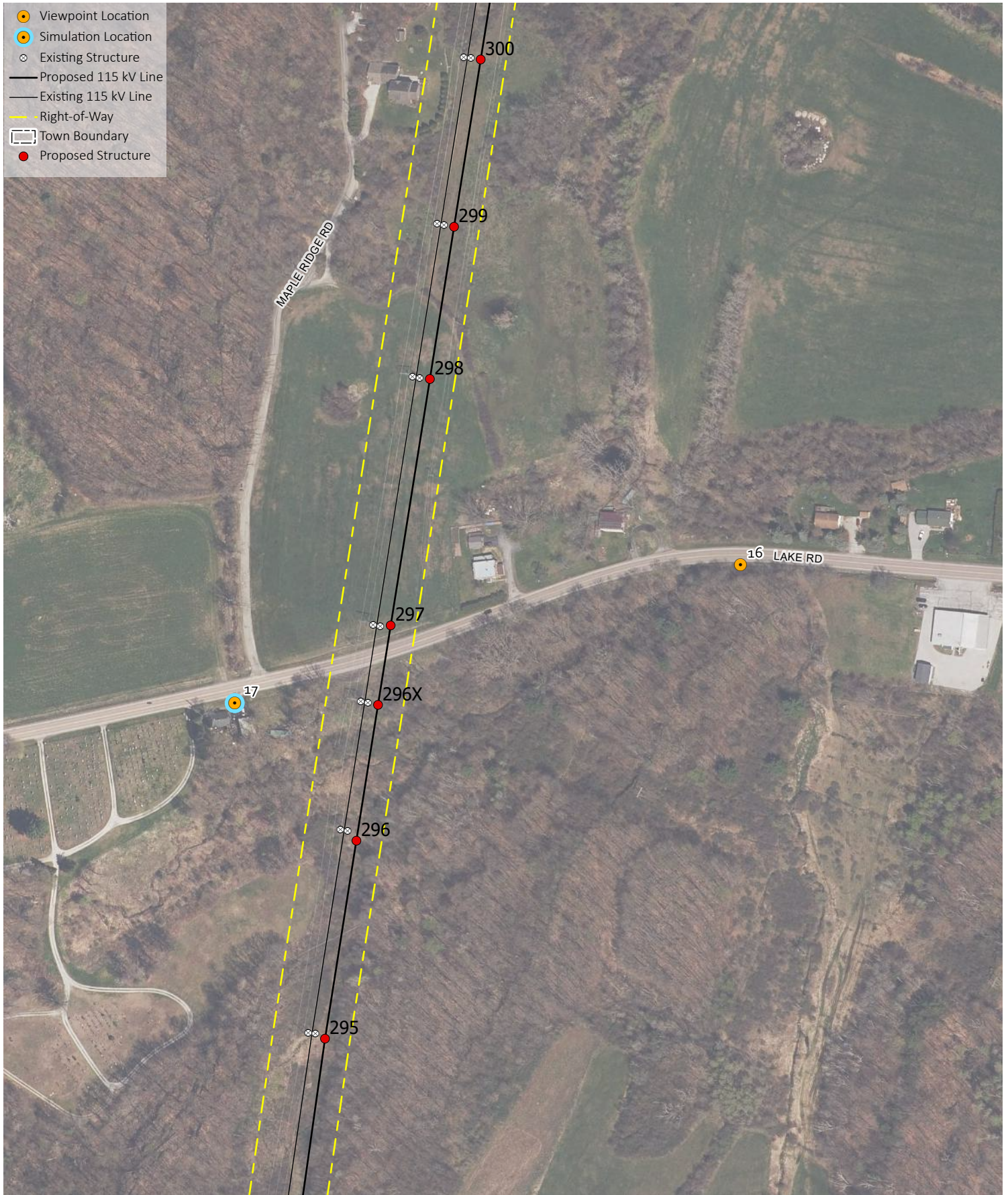
**Viewpoint 14:** View from Sully's Way looking west towards structure Ex. 277. (50mm)



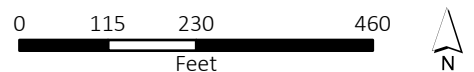
**Viewpoint 15:** Approximately 180° panoramic view from Bronson Road east of the Project, panning from southwest (left) to northeast (right). The orange rectangle represents the image below, which is captured with a 50mm lens.



**Viewpoint 15:** View from Bronson Road looking west towards structure Ex. 285. (50mm)



VELCO Franklin County Line Upgrade - MAP 7:  
Lake Road Corridor Crossings - St. Albans Town, VT







**Viewpoint 16:** Approximately 180° panoramic view from Lake Road (VT Route 36), panning from southeast (left) to northeast (right). The orange rectangle represents the image below, which is captured with a 50mm lens.



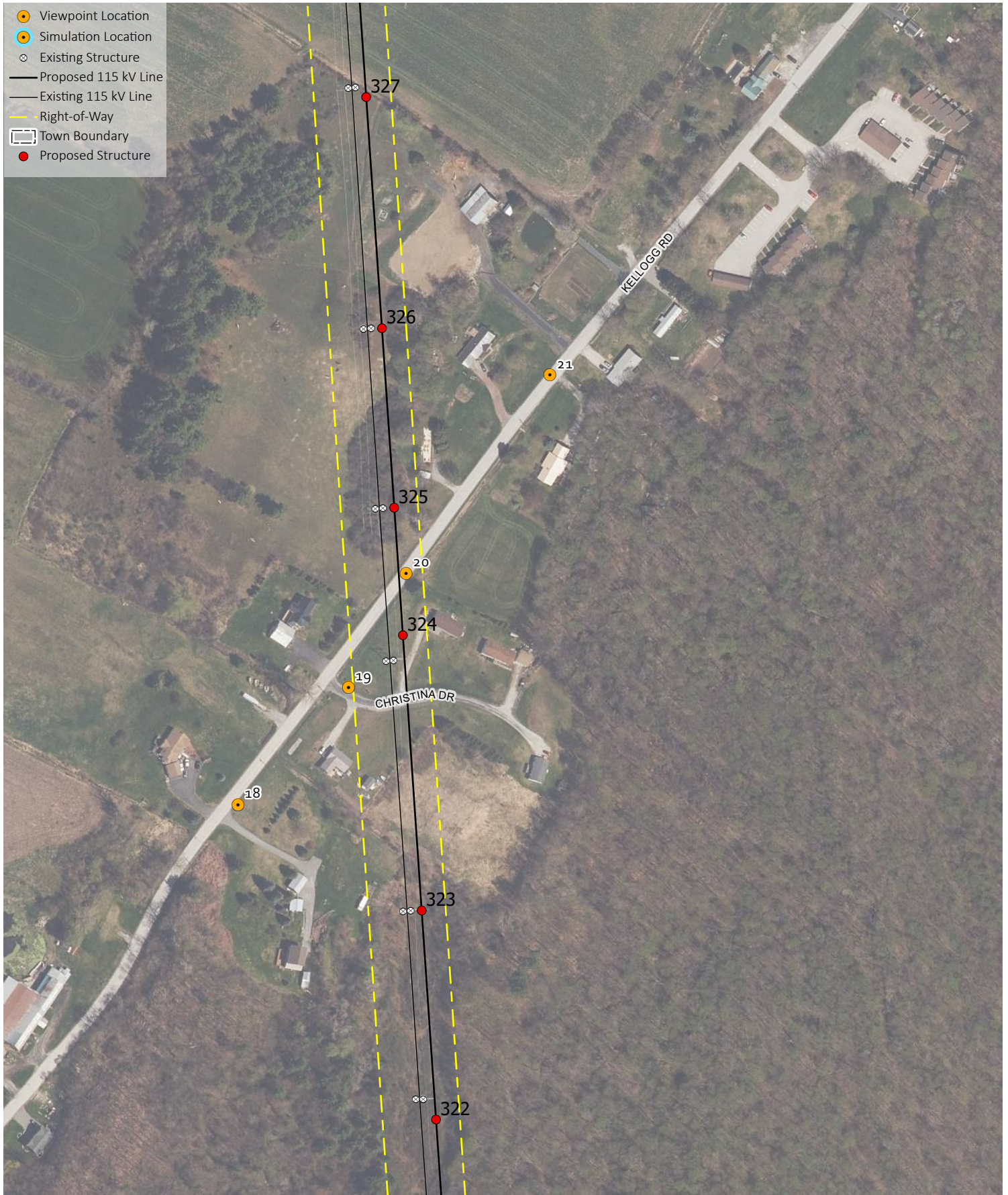
**Viewpoint 16:** View from Lake Road (VT Route 36) looking southwest towards structure Ex. 297. (50mm)



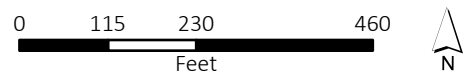
**Viewpoint 17:** Approximately 180° panoramic view from Lake Road (VT Route 36), panning from north (left) to south (right). The orange rectangle represents the image below, which is captured with a 50mm lens.



**Viewpoint 17:** View from Lake Road (VT Route 36) looking east towards structure Ex. 297. (50mm)



VELCO Franklin County Line Upgrade - MAP 8:  
Kellogg Road Corridor Crossings - St. Albans Town, VT

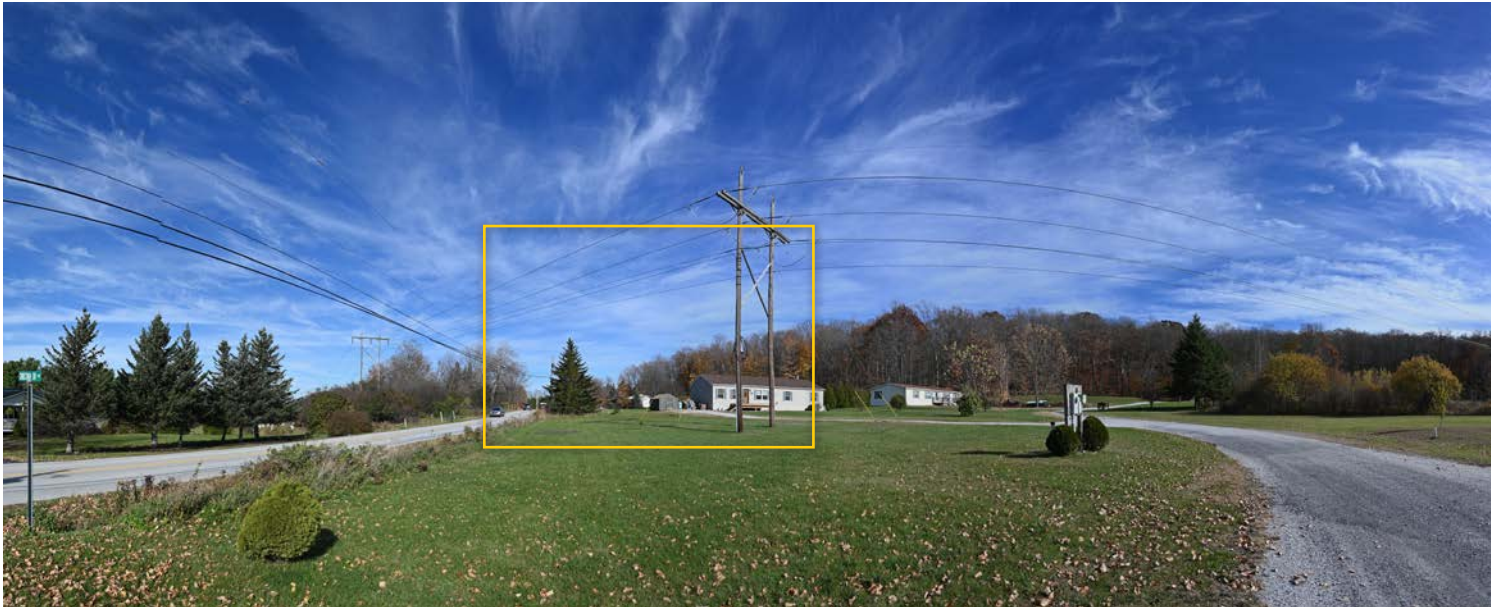




**Viewpoint 18:** Approximately 180° panoramic view from Kellogg Road, panning from northwest (left) to southeast (right). The orange rectangle represents the image below, which is captured with a 50mm lens.



**Viewpoint 18:** View from Kellogg Road looking northeast towards structure Ex. 324. (50mm)



**Viewpoint 19:** Approximately 180° panoramic view from Christina Drive, panning from northwest (left) to southeast (right). The orange rectangle represents the image below, which is captured with a 50mm lens.



**Viewpoint 19:** View from Christina Drive looking northeast towards structure Ex. 324. (50mm)



**Viewpoint 20:** Approximately 180° panoramic view from Kellogg Road, panning from southeast (left) to northwest (right). The orange rectangle represents the image below, which is captured with a 50mm lens.



**Viewpoint 20:** View from Kellogg Road looking south towards structure Ex. 324. (50mm)



**Viewpoint 21:** Approximately 180° panoramic view from Kellogg Road, panning from southeast (left) to northwest (right). The orange rectangle represents the image below, which is captured with a 50mm lens.



**Viewpoint 21:** View from Kellogg Road looking northwest towards structure Ex. 327. (50mm)



VELCO Franklin County Line Upgrade - MAP 9:  
Lower Newton Road Corridor Crossing - St. Albans Town, VT







**Viewpoint 22:** Approximately 180° panoramic view from Lower Newton Road (VT Route 38), panning from northeast (left) to southwest (right). The orange rectangle represents the image below, which is captured with a 50mm lens.



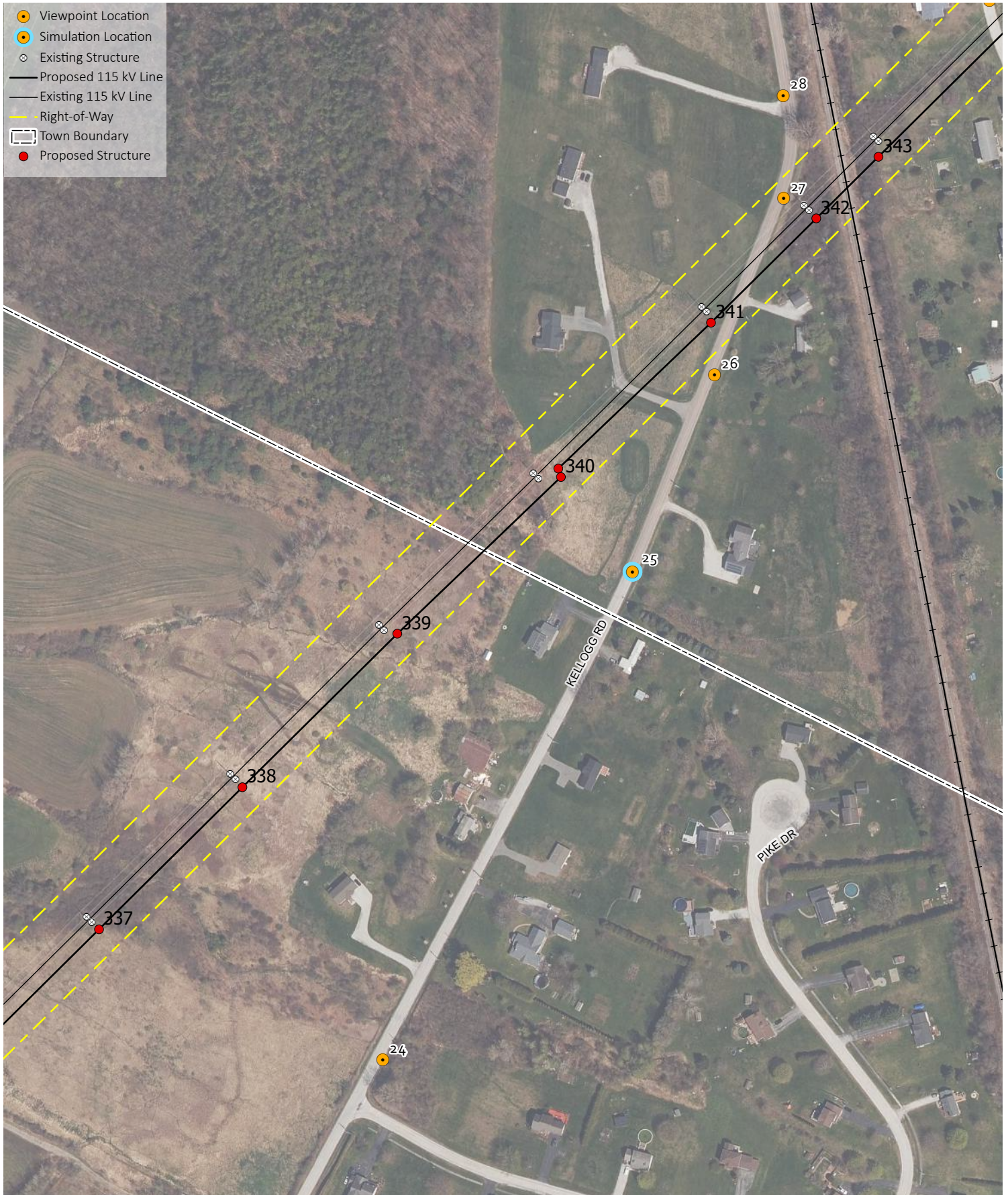
**Viewpoint 22:** View from Lower Newton Road (VT Route 38) looking northeast towards structure Ex. 332. (50mm)



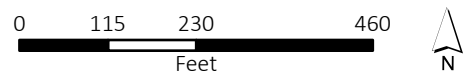
**Viewpoint 23:** Approximately 180° panoramic view from Lower Newton Road (VT Route 38), panning from north (left) to south (right). The orange rectangle represents the image below, which is captured with a 50mm lens.



**Viewpoint 23:** View from Lower Newton Road (VT Route 38) looking southeast toward the Project. (50mm)



VELCO Franklin County Line Upgrade - MAP 10:  
 Kellogg Road Corridor Crossing - St. Albans Town / Swanton, VT





**Viewpoint 24:** Approximately 180° panoramic view from Kellogg Road, panning from southwest (left) to northeast (right). The orange rectangle represents the image below, which is captured with a 50mm lens.



**Viewpoint 24:** View from Kellogg Road looking west towards structure Ex. 336. (50mm)



**Viewpoint 25:** Approximately 180° panoramic view from Kellogg Road, panning from southwest (left) to northeast (right). The orange rectangle represents the image below, which is captured with a 50mm lens.



**Viewpoint 25:** View from Kellogg Road looking north towards structure Ex. 341. (50mm)



**Viewpoint 25:** Approximately 180° panoramic view from Kellogg Road, panning from southwest (left) to northeast (right). The orange rectangle represents the image below, which is captured with a 50mm lens.



**Viewpoint 25:** View from Kellogg Road looking north towards structure Ex. 341. (50mm)



**Viewpoint 26:** Approximately 180° panoramic view from Kellogg Road, panning from southwest (left) to northeast (right). The orange rectangle represents the image below, which is captured with a 50mm lens.



**Viewpoint 26:** View from Kellogg Road looking northeast towards structure Ex. 342. (50mm)



**Viewpoint 27:** Approximately 180° panoramic view from Kellogg Road, panning from south (left) to north (right). The orange rectangle represents the image below, which is captured with a 50mm lens.



**Viewpoint 27:** View from Kellogg Road looking southwest towards structure Ex. 341. (50mm)

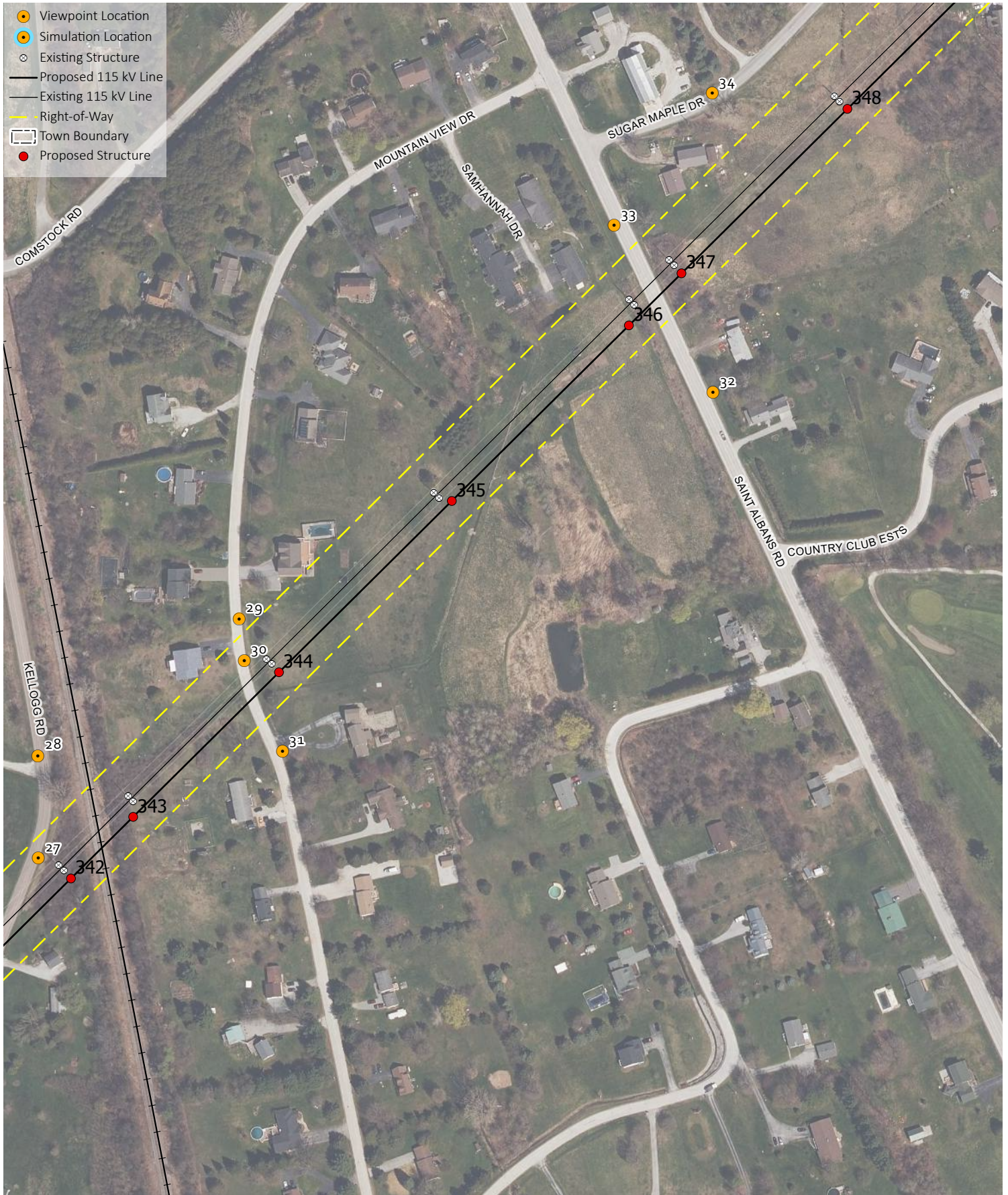




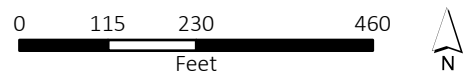
**Viewpoint 28:** Approximately 180° panoramic view from Kellogg Road, panning from east (left) to west (right). The orange rectangle represents the image below, which is captured with a 50mm lens.



**Viewpoint 28:** View from Kellogg Road looking south towards structure Ex. 342 (50mm)



**VELCO Franklin County Line Upgrade - MAP 11:**  
 Mountain View Drive / St. Albans Road (Route 7) Corridor Crossings -  
 Swanton, VT





**Viewpoint 29:** Approximately 180° panoramic view from Mountain View Drive, panning from northeast (left) to southwest (right). The orange rectangle represents the image below, which is captured with a 50mm lens.



**Viewpoint 29:** View from Mountain View Drive looking southeast towards structure Ex. 344. (50mm)



**Viewpoint 30:** Approximately 180° panoramic view from Mountain View Drive, panning from northeast (left) to southwest (right). The orange rectangle represents the image below, which is captured with a 50mm lens.



**Viewpoint 30:** View from Mountain View Drive looking southwest towards structure Ex. 343. (50mm)



**Viewpoint 31:** Approximately 180° panoramic view from Mountain View Drive, panning from south (left) to north (right). The orange rectangle represents the image below, which is captured with a 50mm lens.



**Viewpoint 31:** View from Mountain View Drive looking west towards structure Ex. 343. (50mm)



**Viewpoint 32:** Approximately 180° panoramic view from St. Albans Road (Route 7), panning from south (left) to north (right). The orange rectangle represents the image below, which is captured with a 50mm lens.



**Viewpoint 32:** View from St. Albans Road (Route 7) looking northwest towards structure Ex. 346. (50mm)



**Viewpoint 33:** Approximately 180° panoramic view from St. Albans Road (Route 7), panning from northeast (left) to southwest (right). The orange rectangle represents the image below, which is captured with a 50mm lens.



**Viewpoint 33:** View from St. Albans Road (Route 7) looking south towards structure Ex. 346. (50mm)

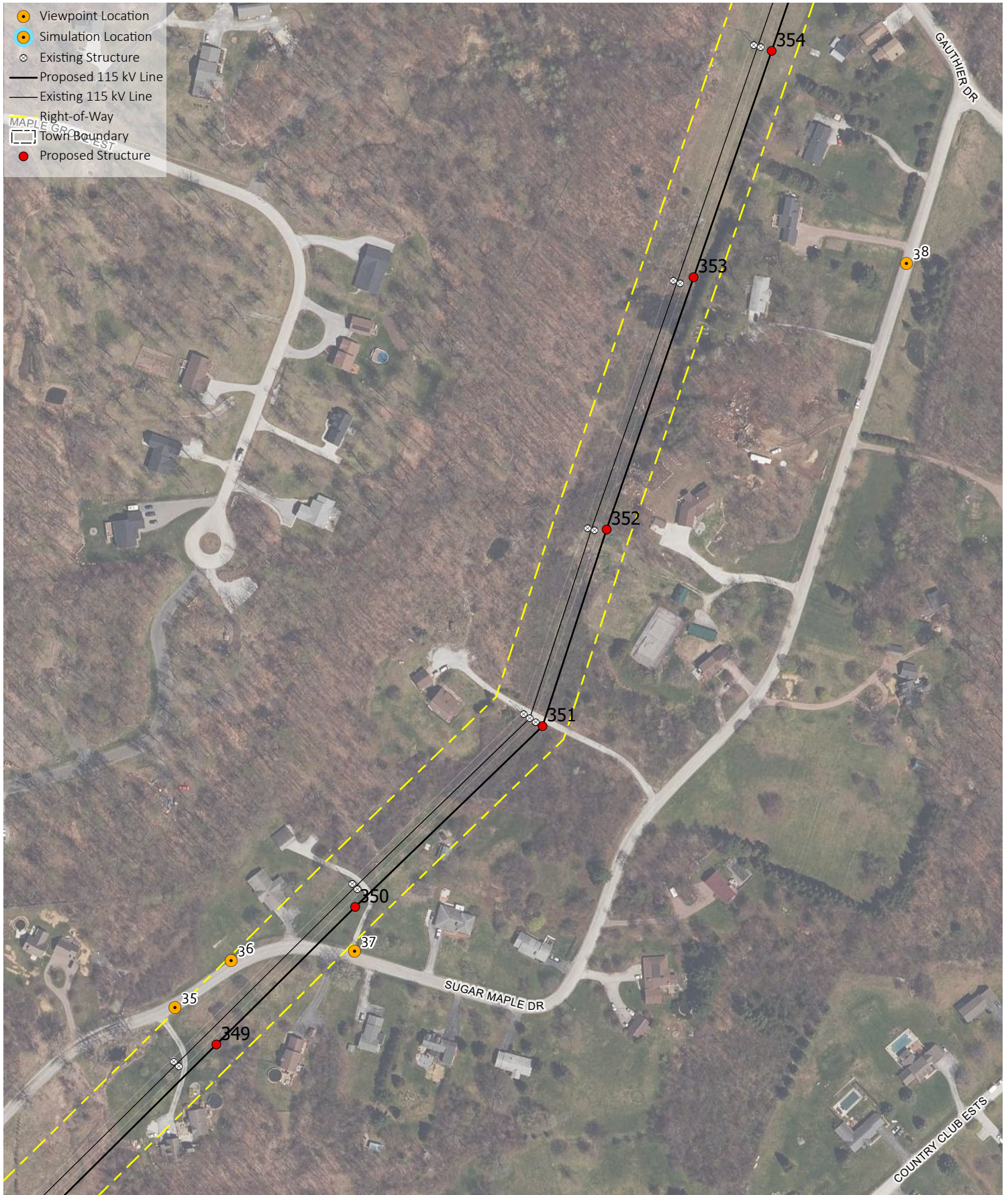


**Viewpoint 34:** Approximately 180° panoramic view from Sugar Maple Drive, panning from north (left) to south (right). The orange rectangle represents the image below, which is captured with a 50mm lens.

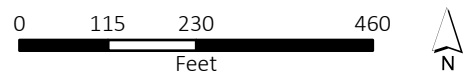


**Viewpoint 34:** View from Sugar Maple Drive looking northeast towards structure Ex. 348. (50mm)





VELCO Franklin County Line Upgrade - MAP 12:  
Sugar Maple Drive Corridor Crossing - Swanton, VT





**Viewpoint 35:** Approximately 180° panoramic view from Sugar Maple Drive, panning from northeast (left) to southwest (right). The orange rectangle represents the image below, which is captured with a 50mm lens.



**Viewpoint 35:** View from Sugar Maple Drive looking southeast towards structure Ex. 349. (50mm)



**Viewpoint 35:** Approximately 180° panoramic view from Sugar Maple Drive, panning from northeast (left) to southwest (right). The orange rectangle represents the image below, which is captured with a 50mm lens.



**Viewpoint 35:** View from Sugar Maple Drive looking southeast towards structure Ex. 349. (50mm)



**Viewpoint 35:** Approximately 180° panoramic view from Sugar Maple Drive, panning from northeast (left) to southwest (right). The orange rectangle represents the image below, which is captured with a 50mm lens.



**Viewpoint 35:** View from Sugar Maple Drive looking northeast towards structure Ex. 350. (50mm)



**Viewpoint 36:** Approximately 180° panoramic view from Sugar Maple Drive, panning from northeast (left) to southwest (right). The orange rectangle represents the image below, which is captured with a 50mm lens.



**Viewpoint 36:** View from Sugar Maple Drive looking south towards structure Ex. 349. (50mm)



**Viewpoint 37:** Approximately 180° panoramic view from Sugar Maple Drive, panning from southwest (left) to northeast (right). The orange rectangle represents the image below, which is captured with a 50mm lens.



**Viewpoint 37:** View from Sugar Maple Drive looking north towards structure Ex. 350. (50mm)



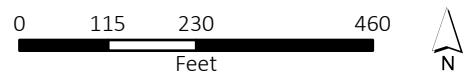
**Viewpoint 38:** Approximately 180° panoramic view from Sugar Maple Drive, panning from southwest (left) to northeast (right). The orange rectangle represents the image below, which is captured with a 50mm lens.



**Viewpoint 38:** View from Sugar Maple Drive looking northwest towards structure Ex. 354. (50mm)



VELCO Franklin County Line Upgrade - MAP 13:  
Gauthier Drive Corridor Crossing - Swanton, VT







**Viewpoint 39:** Approximately 180° panoramic view from Gauthier Drive, panning from south (left) to north (right). The orange rectangle represents the image below, which is captured with a 50mm lens.



**Viewpoint 39:** View from Gauthier Drive looking north. (50mm)



**Viewpoint 40:** Approximately 180° panoramic view from Gauthier Drive, panning from southwest (left) to northeast (right). The orange rectangle represents the image below, which is captured with a 50mm lens.



**Viewpoint 40:** View from Gauthier Drive looking northeast. (50mm)



**Viewpoint 41:** Approximately 180° panoramic view from Gauthier Drive, panning from northeast (left) to southwest (right). The orange rectangle represents the image below, which is captured with a 50mm lens.



**Viewpoint 41:** View from Gauthier Drive looking southwest. (50mm)



**Viewpoint 41:** Approximately 180° panoramic view from Gauthier Drive, panning from northeast (left) to southwest (right). The orange rectangle represents the image below, which is captured with a 50mm lens.



**Viewpoint 41:** View from Gauthier Drive looking southwest. (50mm)



**Viewpoint 41:** Approximately 180° panoramic view from Gauthier Drive, panning from west (left) to east (right). The orange rectangle represents the image below, which is captured with a 50mm lens.



**Viewpoint 41:** View from Gauthier Drive looking north at structure Ex. 357. (50mm)



**Viewpoint 42:** Approximately 180° panoramic view from Bachand Road, panning from northeast (left) to southwest (right). The orange rectangle represents the image below, which is captured with a 50mm lens.



**Viewpoint 42:** View from Bachand Road looking south along Gauthier Drive. (50mm)



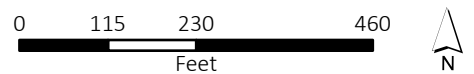
**Viewpoint 43:** Approximately 180° panoramic view from Gauthier Drive, panning from west (left) to east (right). The orange rectangle represents the image below, which is captured with a 50mm lens.



**Viewpoint 43:** View from Gauthier Drive looking north towards structure Ex. 358. (50mm)



VELCO Franklin County Line Upgrade - MAP 14:  
Interstate 89 S / Interstate 89 N Corridor Crossings - Swanton, VT







**Viewpoint 44:** Approximately 180° panoramic view from I-89 northbound, panning from southwest (left) to northeast (right). The orange rectangle represents the image below, which is captured with a 50mm lens.



**Viewpoint 44:** View from I-89 northbound looking north. (50mm)



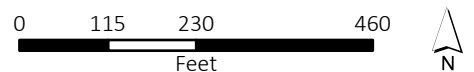
**Viewpoint 45:** Approximately 180° panoramic view from I-89 southbound, panning from northeast (left) to southwest (right). The orange rectangle represents the image below, which is captured with a 50mm lens.



**Viewpoint 45:** View from I-89 southbound looking southeast (50mm)



VELCO Franklin County Line Upgrade - MAP 15:  
Woods Hill Road / Butternut Lane Corridor Crossing - Swanton, VT





**Viewpoint 46:** Approximately 180° panoramic view from Woods Hill Road, panning from southwest (left) to northeast (right). The orange rectangle represents the image below, which is captured with a 50mm lens.



**Viewpoint 46:** View from Woods Hill Road looking northwest (50mm)



**Viewpoint 47:** Approximately 180° panoramic view from Woods Hill Road, panning from northeast (left) to southwest (right). The orange rectangle represents the image below, which is captured with a 50mm lens.



**Viewpoint 47:** View from Woods Hill Road looking northeast. (50mm)



**Viewpoint 48:** Approximately 180° panoramic view from Butternut Lane, panning from southwest (left) to northeast (right). The orange rectangle represents the image below, which is captured with a 50mm lens.



**Viewpoint 48:** View from Butternut Lane looking northwest. (50mm)



**Viewpoint 49:** Approximately 180° panoramic view from Butternut Lane, panning from southwest (left) to northeast (right). The orange rectangle represents the image below, which is captured with a 50mm lens.



**Viewpoint 49:** View from Butternut Lane looking northwest. (50mm)



**Viewpoint 49:** Approximately 180° panoramic view from Butternut Lane, panning from southwest (left) to northeast (right). The orange rectangle represents the image below, which is captured with a 50mm lens.



**Viewpoint 49:** View from Butternut Lane looking northwest. (50mm)

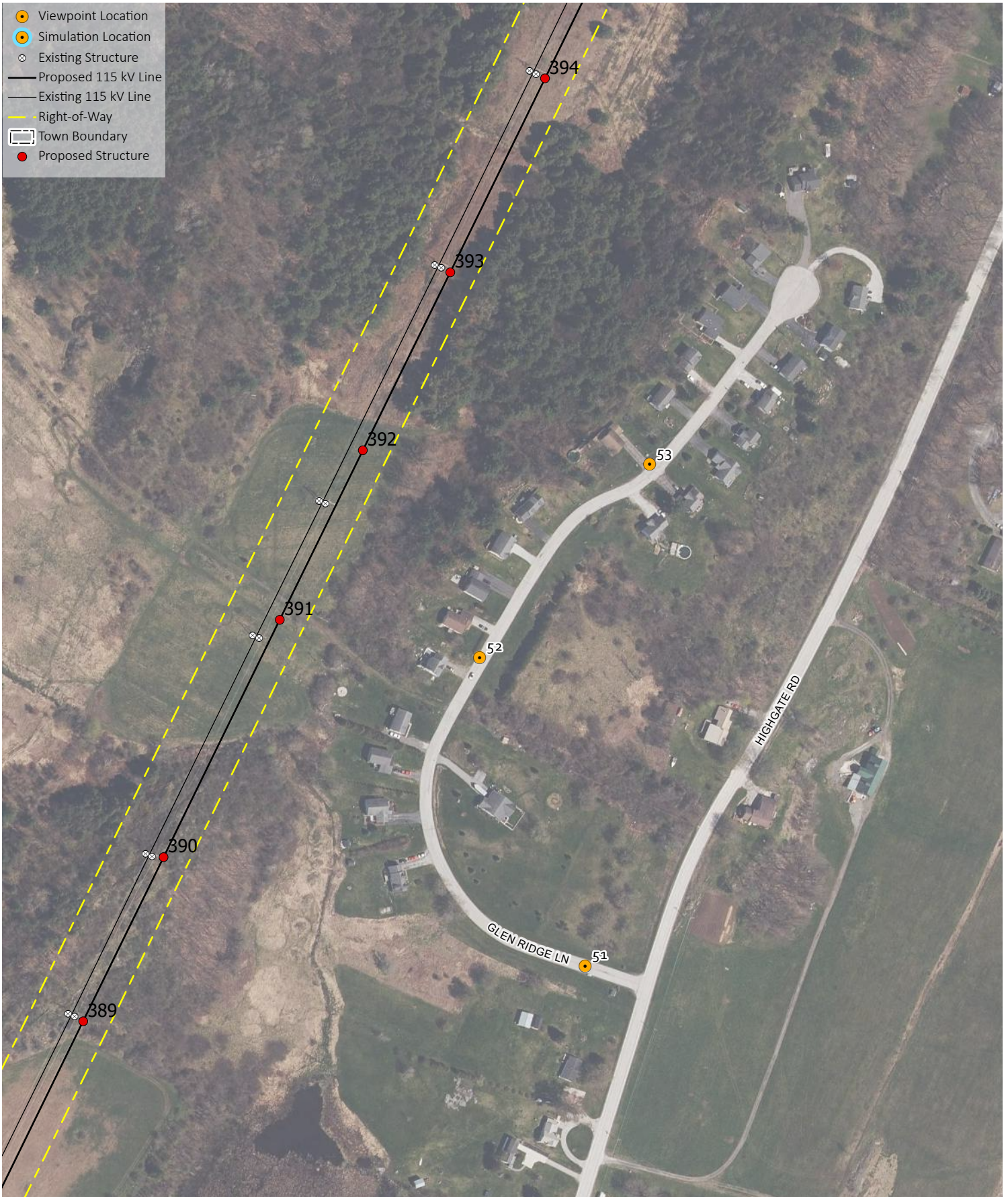




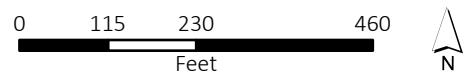
**Viewpoint 50:** Approximately 180° panoramic view from Butternut Lane, panning from southwest (left) to northeast (right). The orange rectangle represents the image below, which is captured with a 50mm lens.



**Viewpoint 50:** View from Butternut Lane looking north at existing vegetation northwest of Butternut Lane (24mm)



VELCO Franklin County Line Upgrade - MAP 16:  
Glen Ridge Lane - Swanton, VT





**Viewpoint 51:** Approximately 180° panoramic view from Glen Ridge Lane, panning from southwest (left) to northeast (right). The orange rectangle represents the image below, which is captured with a 50mm lens.



**Viewpoint 51:** View from Glen Ridge Lane looking northwest. (50mm)



**Viewpoint 52:** Approximately 180° panoramic view from Glen Ridge Lane, panning from southeast (left) to northwest (right). The orange rectangle represents the image below, which is captured with a 50mm lens.



**Viewpoint 52:** View from Glen Ridge Lane looking southwest. (50mm)



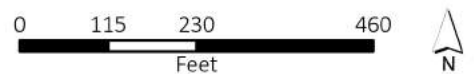
**Viewpoint 53:** Approximately 180° panoramic view from Glen Ridge Lane, panning from southeast (left) to northwest (right). The orange rectangle represents the image below, which is captured with a 50mm lens.



**Viewpoint 53:** View from Glen Ridge Lane looking southwest. (50mm)



VELCO Franklin County Line Upgrade - MAP 17:  
Baker Road - Highgate, VT





**Viewpoint 54:** Approximately 180° panoramic view from Baker Road, panning from northeast (left) to southwest (right). The orange rectangle represents the image below, which is captured with a 50mm lens.



**Viewpoint 54:** View from Baker Road looking southwest. (50mm)



**Viewpoint 55:** Approximately 180° panoramic view from Highgate Road, panning from southeast (left) to northwest (right). The orange rectangle represents the image below, which is captured with a 50mm lens.



**Viewpoint 55:** View from the Highgate Road bridge looking southwest. (50mm)





**Viewpoint 56:** Approximately 180° panoramic view from the Portage Trail, panning from south (left) to north (right). The orange rectangle represents the image below, which is captured with a 50mm lens.



**Viewpoint 56:** View from the Portage Trail looking northwest. (50mm)



**Viewpoint 57:** Approximately 180° panoramic view from the Portage Trail, panning from northeast (left) to southwest (right). The orange rectangle represents the image below, which is captured with a 50mm lens.



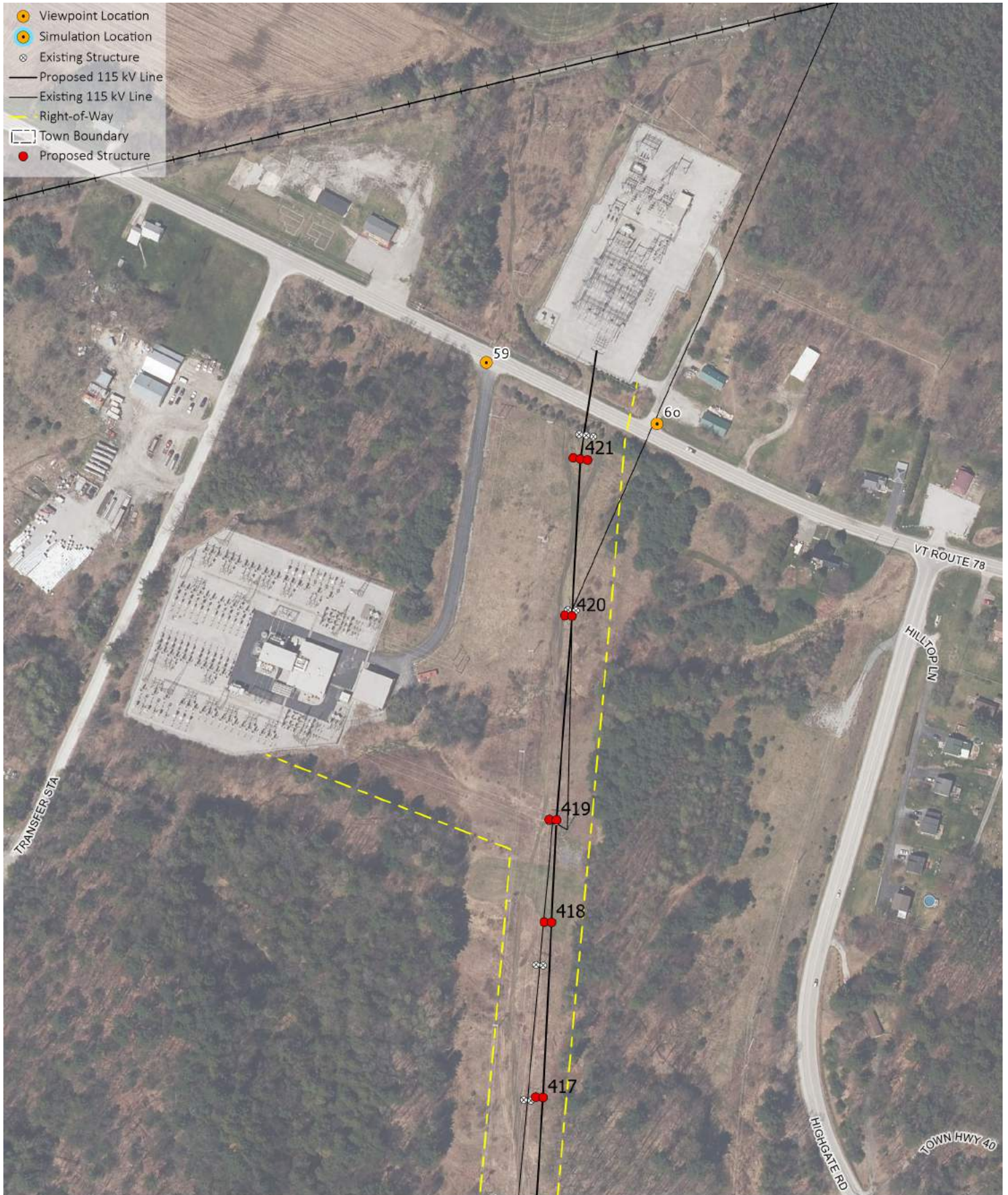
**Viewpoint 57:** View from the Portage Trail looking south. (50mm)



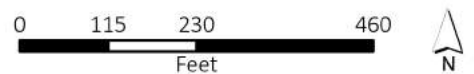
**Viewpoint 58:** Approximately 180° panoramic view from the Portage Trail & Boat Launch, panning from north (left) to south (right). The orange rectangle represents the image below, which is captured with a 50mm lens.



**Viewpoint 58:** View from the Portage Trail & Boat Launch looking south. (50mm)



VELCO Franklin County Line Upgrade - MAP 18:  
VT Route 78 Corridor Crossing - Highgate, VT





**Viewpoint 59:** Approximately 180° panoramic view from VT Route 78, panning from north (left) to south (right). The orange rectangle represents the image below, which is captured with a 50mm lens.



**Viewpoint 59:** View from VT Route 78 looking east. (50mm)



**Viewpoint 60:** Approximately 180° panoramic view from VT Route 78, panning from south (left) to north (right). The orange rectangle represents the image below, which is captured with a 50mm lens.



**Viewpoint 60:** View from VT Route 78 looking west. (50mm)