



Northeast East Southeast South Southwest

Panoramic View

The image above is a +/- 180° Panoramic view from Gauthier Drive approximately 265 feet north of the nearest Project structure, panning from northeast (left) to Southwest (right). The white rectangle represents the extent of the simulation photo.

General Information

Base Photography

Date: January 16, 2023
Time: 1:30 pm
Image Size: 6,048 x 4,024 pixels

Camera Properties

Camera Make/Model: Nikon Z 6II
Sensor Dimensions: 35.9 mm x 23.9 mm
Lens Make/Model: Nikkor Z 24-70 mm
Lens Focal Length: 50 mm
Approximate Angles of View:
39.6° wide and 27° high
Camera Height: 1.5 meters (5 feet)

Viewpoint Information

Location: Gauthier Drive - Swanton, VT
Latitude: 44.86844°
Longitude: -73.0871°
Viewpoint Elevation: 402 feet (Approx.)
Orientation: Looking south

Simulation Viewing Notes

The simulation is properly printed on an 11-by-17 inches sheet at actual size. The simulated image is at the proper perspective when viewed at 23.5 inches from the eye or at a distance of approximately twice the image height. If viewed on a computer monitor, use the highest screen resolution.

Project Design

The simulation is based on the best information available in May 2023.

Sheet Information

Sheet 1
Information Sheet

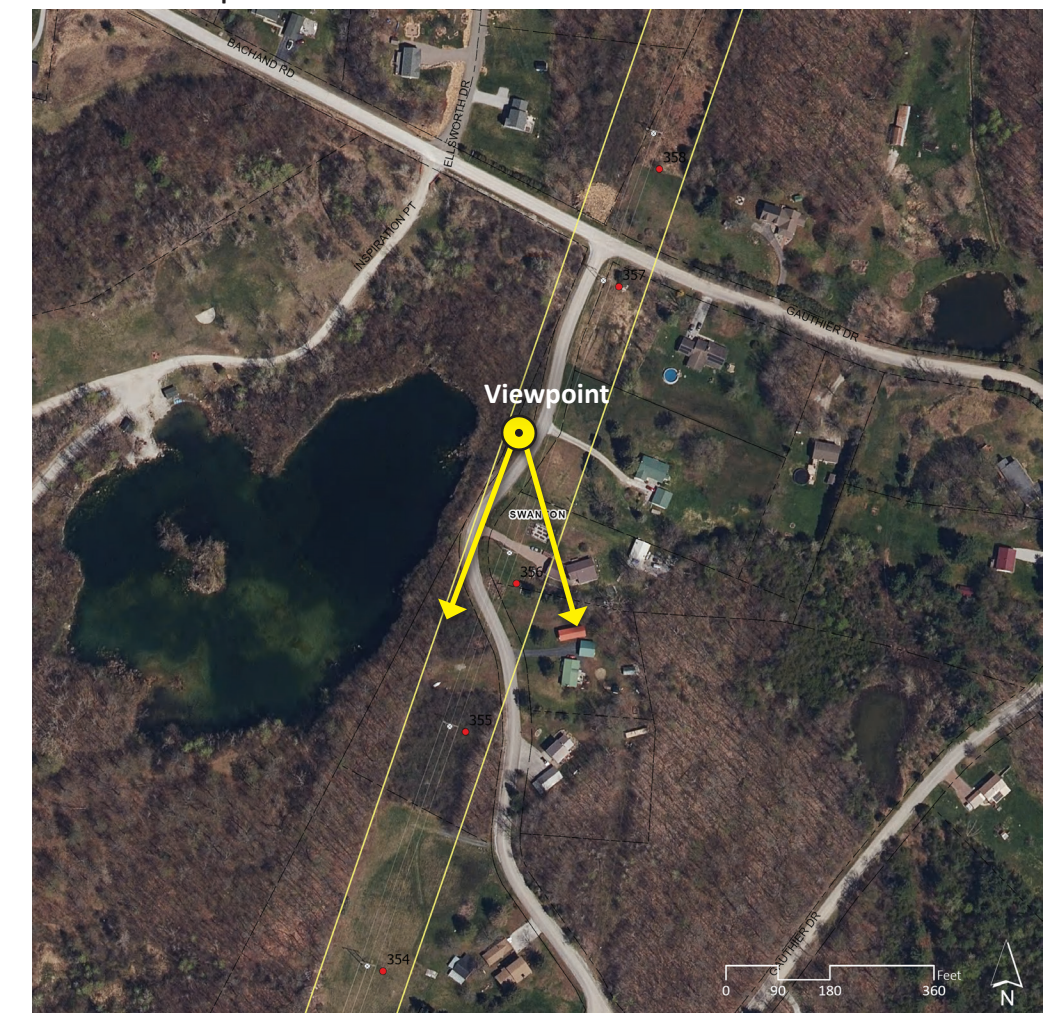
Sheet 2
Existing Conditions

View looking directly towards the Project, as represented by the white rectangle in the panoramic view above.

Sheet 3
Simulated Conditions

View looking directly towards the proposed Project.

Context Map





Simulation 4: Existing Conditions



Simulation 4: Simulated Conditions